



Export CATALOGUE Venezuela

2024



Update to May 2024

ENGLISH

SECTOR

FOOD





CONTENT

FOOD

Cocoa Butter, Chocolate bar, Cocoa Powder, Margarine, Seaweed, Rice, Sugar, Corn Flour, Conteria.

LIVESTOCK

Genetics Semen and Embryos, Whole Frozen Chickens or their parts, Commercial live cattle for profit, Frozen Carcass Meats, Dairy Products and By-products, Cheeses, Yogurts and Sweets, Sausages, Sausages, Lunch Meats and Meats or Spreads, Hay Bales Silage, and Genetics in Foot Breeders.

FRUIT

Nectar (Peach, Guava, Mango, Tamarind and Fruit Cocktail), Coconuts, Avocado, Pineapple, Tamarinds, Mangoes (Haden, Kent, Keitt), Papaya, Watermelon, Passion Fruit and Banana.

GRAIN

Cocoa beans, Roasted coffee beans, Green coffee beans, Green mung beans, Sesame seeds and Tonka beans.

HYDROBIOLOGICAL

Fish and crustaceans, mollusks and other aquatic invertebrates.

Catfish Fish, Shrimp, Prawns, Corvina Fish, Guanapo Snapper Fish, Tahalí Fish, Crab and Lobster.



FOOD



Product:

WHOLE COCONUTS

DRIED COCONUTS

CODE: 0801.11.00.00

It is a fruit that grows on coconut palm trees found in tropical and subtropical regions. This product is practically 100% usable for various uses, culinary and non-culinary, useful for creams, gels or lotions, as well as for human consumption.

Coconut is grown along the Venezuelan coast, two production poles are observed in the states of Falcón and Sucre, which cover nearly 70% of the country's total production.



TARIFF DESCRIPTION

DRY

UNIT OF MEASUREMENT

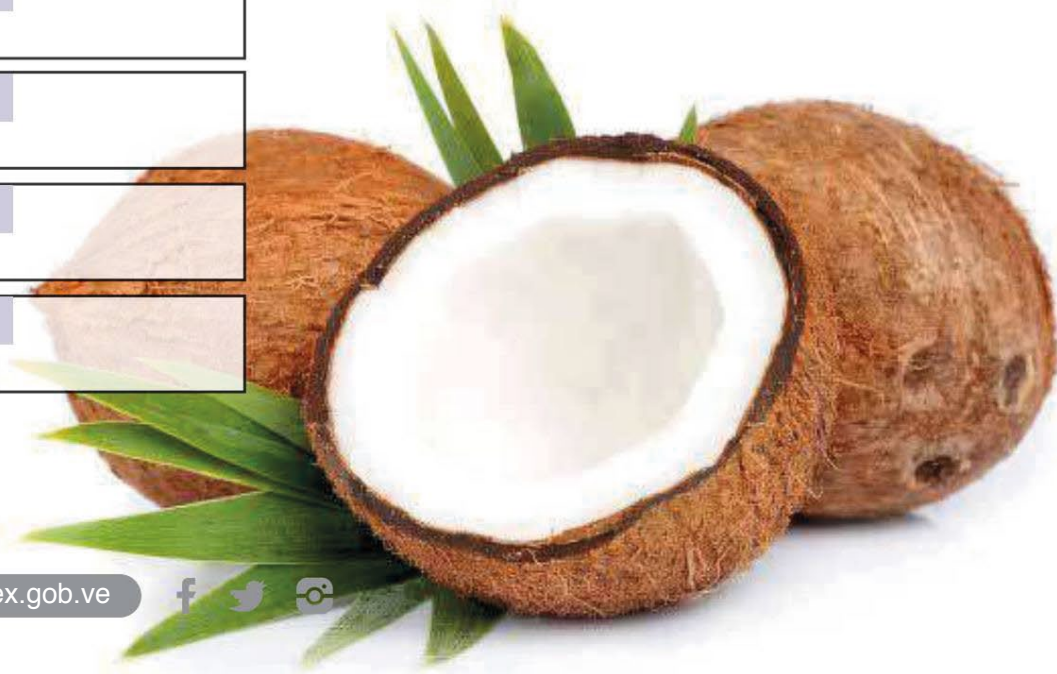
TONS

PRODUCING STATES

SUCRE, FALCON

OFFERED QUANTITY

1398.62 TONS



FOOD



Product:

PINEAPPLES

CODE: 0804.30.00.00

This tropical product is a plant that belongs to the bromeliaceae family, genus "anna", species sativa. It grows in the soil where it takes the shape of a rosette composed of multiple rigid leaves with thorns. This plant requires a warm climate and high environmental humidity to develop, two harvests are obtained per year.



UNIT OF MEASUREMENT

TONS

PRODUCING STATES

LARA, BOLIVAR, AMAZONAS, TACHIRA

TARIFF DESCRIPTION

PINEAPPLE

OFFERED QUANTITY

6956.54 TONS



FOOD



Product:

TAMARINDS

CODE: 0813.40.90.00

It is a fruit that is obtained from a tree that has the same name; It is a highly demanded food in Asian and Latin American cuisine. It has vitamins of groups b, c and e, as well as a high fiber content, and also contains important minerals such as calcium, iron, potassium, magnesium, zinc and phosphorus.

The tamarind fruit has different uses, both culinary and medicinal, it has innumerable nutritional properties. The wood from its tree is used in some countries to make furniture due to its great resistance.



UNIT OF MEASUREMENT

TONS

PRODUCING STATES

FALCON AND LARA

TARIFF DESCRIPTION

OTHERS

OFFERED QUANTITY

581.65 TONS



FOOD



Product:

HANDLES

CODE: 0804.50.20.00.

It is a fruit that is obtained from a tree with the same name, it has an oval shape, with inedible skin, variable color from pale yellow to intense red, the pulp is sticky and its color also varies, from yellow to orange. The flavor of ripe mango is sweet, but it is quite sour when still green. It is a juicy and fibrous fruit, and has an interior stone.

Mango is a fruit with a sweet flavor, with a smooth yellow or pinkish shell, with very fleshy pulp that occurs mainly in the intertropical zone. Mango is one of the national fruits of Venezuela that is grown all year round, with its high season being from the end of April to the month of September.



UNIT OF MEASUREMENT

TONS

PRODUCING STATES

ARAGUA, CARABOBO, MIRANDA, GUÁRICO, ANZOÁTEGUI AND MONAGAS

TARIFF DESCRIPTION

HANDLES

OFFERED QUANTITY

164 TONS



FOOD



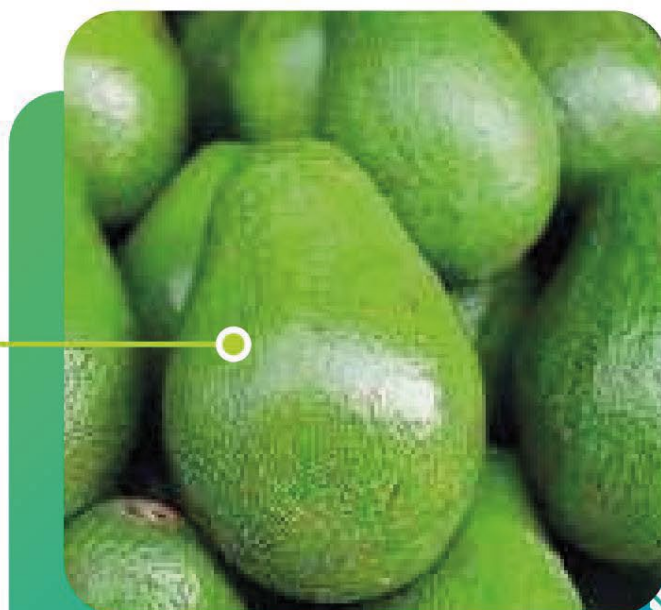
Product:

AVOCADOS

CODE: 0804.40.00.00.

It is an exotic fleshy fruit that is obtained from a tropical tree that has the same name, in some parts of South America it is known as avocado. The normal weight ranges between 200-400 g, although pieces weighing up to 2 kg can be found. The bark is thick and hard, green in color, the tone of which depends on the variety. The pulp is creamy to yellowish-green oily, with a nutty flavor. It has a single rounded light brown seed.

The avocado tree, also known as palta, grows mainly in tropical climates.



The traditional planting season is when the rains come out (September, October), but in recent years the planting area has increased during the rainy season (April, May). Harvesting takes place six months after sowing.

UNIT OF MEASUREMENT

TONS

PRODUCING STATES

ARAGUA, CARABOBO AND YARACUY

TARIFF DESCRIPTION

AVOCADOS (AVOCADO)

OFFERED QUANTITY

N/A TONS



FOOD



Product:

PEACH JUICE

CODE: 2009.89.19.00

Juice or fruit juice is an extract of fruits in liquid form that is obtained after squeezing the inside of the fruit, usually with a juicer. Many companies are in charge of carrying out the extraction process and it is the nectar that is extracted from the fruit pulp, being considered a food drink from the mixture of several fruits or even just one based on water and sugar. They also contain citric acid, stabilizer and preservatives.

One of the peculiarities of this product is that it does not have stability on its own.



itself, needs to be treated under an adequate heat treatment to ensure its conservation and packaging of the product for its commercialization.

UNIT OF MEASUREMENT

BOXES / LITERS / UNITS

PRODUCING STATES

LARA, CAPITAL DISTRICT, MIRANDA

TARIFF DESCRIPTION

OTHERS

OFFERED QUANTITY

7736 TONS



FOOD



Product:

APPLE JUICE

CODE: 2009.79.00.00

Juice or fruit juice is an extract of fruits in liquid form that is obtained after squeezing the inside of the fruit, usually with a juicer. Many companies are in charge of carrying out the extraction process and it is the nectar that is extracted from the fruit pulp, being considered a food drink from the mixture of several fruits or even just one based on water and sugar. They also contain citric acid, stabilizer and preservatives.

One of the peculiarities of this product is that it does not have stability on its own.



itself, needs to be treated under an adequate heat treatment to ensure its conservation and packaging of the product for its commercialization.

UNIT OF MEASUREMENT

LITERS / UNITS

PRODUCING STATES

LARA, CAPITAL DISTRICT, MIRANDA

TARIFF DESCRIPTION

OTHERS

OFFERED QUANTITY

1530 TONS



FOOD



Product:

PEAR JUICE

CODE: 2009.89.90.00

Juice or fruit juice is an extract of fruits in liquid form that is obtained after squeezing the inside of the fruit, usually with a juicer. Many companies are in charge of carrying out the extraction process and it is the nectar that is extracted from the fruit pulp, being considered a food drink from the mixture of several fruits or even just one based on water and sugar. They also contain citric acid, stabilizer and preservatives.

One of the peculiarities of this product is that it does not have stability on its own.



itself, needs to be treated under an adequate heat treatment to ensure its conservation and packaging of the product for its commercialization.

UNIT OF MEASUREMENT

BOXES / LITERS / UNITS

PRODUCING STATES

LARA, CAPITAL DISTRICT, MIRANDA

TARIFF DESCRIPTION

OTHERS

OFFERED QUANTITY

62764 TONS



FOOD



Product:

FRUIT JUICE

CODE: 2009.90.00.00

Juice or fruit juice is an extract of fruits in liquid form that is obtained after squeezing the inside of the fruit, usually with a juicer. Many companies are in charge of carrying out the extraction process and it is the nectar that is extracted from the fruit pulp, being considered a food drink from the mixture of several fruits or even just one based on water and sugar. They also contain citric acid, stabilizer and preservatives.

One of the peculiarities of this product is that it does not have stability by itself,



It needs to be treated under an adequate heat treatment to ensure its conservation and packaging of the product for its commercialization.

UNIT OF MEASUREMENT

LITERS / UNITS

PRODUCING STATES

LARA, CAPITAL DISTRICT, MIRANDA

TARIFF DESCRIPTION

JUICE MIXES

OFFERED QUANTITY

1397 TONS



FOOD

**Product:**
COFFEE BEANS**CODE: 0901.11.10.90**

Roasted coffee is that which is processed for consumption; The grain goes through a roasting machine that generates the traditional brown color, and whose treatment lasts between 8 and 15 minutes, where the natural attributes of the product are also enhanced.

The first coffee tree that arrived in Venezuela was planted by Spanish missionaries settled in the Caroní River basin, in 1730. They brought the coffee from Brazil, where it had arrived in turn from the republic of Suriname and Cayenne, the capital of Guyana. French.



Between the months of October and March, is when the coffee harvest is produced in Venezuela. At this time, 94% of the crop is reached. However, between the months of December and January, a higher level of harvest is obtained, but in the east of the country, production increases in January and February.

UNIT OF MEASUREMENT

TONS

PRODUCING STATES

LARA, BOLIVAR, MERIDA, MIRANDA

TARIFF DESCRIPTION

IN GRAIN

OFFERED QUANTITY

20.4 TONS



FOOD

**Product:**
GREEN COFFEE**CODE: 0901.11.10.10**

It is coffee that has not yet been processed in the roaster and is in a natural process without any chemical factor, thus preserving its level of chlorogenic acid.

Coffee produced under shade with integrated crop management that uses agrochemicals permitted by the Venezuelan state, in specific cases to control pests and diseases. This coffee must comply with the specific standards for its categorization.

**UNIT OF MEASUREMENT**

TONS

PRODUCING STATES

LARA, BOLIVAR, MERIDA, MIRANDA

TARIFF DESCRIPTION

FOREVER

OFFERED QUANTITY

66.5 TONS



FOOD

Product:
MALT**CODE: 2202.99.00.00**

This magnificent product is a carbonated drink, it is carbonated. This being so due to its composition with barley, hops and water like beer. In some cases these can have corn and caramel color, so we can say that malt does not contain alcohol and is consumed in the same way as soda.

**UNIT OF MEASUREMENT**

BOXES

PRODUCING STATES

ZULIA

TARIFF DESCRIPTION

OTHERS

OFFERED QUANTITY

184984



FOOD

Product:
BEER**CODE: 2203.00.00.00**

It is an alcoholic beverage, not distilled, with a bitter taste, which is made from sprouted barley grains or other cereals whose starch is fermented in water with yeast and is often flavored with hops, among other plants.

**UNIT OF MEASUREMENT**

BOXES

PRODUCING STATES

CAPITAL DISTRICT, ZULIA, ARAGUA,

TARIFF DESCRIPTION

MALT BEER

OFFERED QUANTITY

73080



FOOD

Product:
GENEVA

CODE: 2208.50.00.00



UNIT OF MEASUREMENT

UNITS

PRODUCING STATES

CAPITAL DISTRICT, LARAMIRANDA

TARIFF DESCRIPTION

«GIN» AND GIN

OFFERED QUANTITY

27120



FOOD



Product: RON

CODE: 2208.40.00.00

Rum is a liquor that is obtained by fermenting, distilling and aging sugar cane (or molasses derived from it) in wooden barrels for periods of time that vary depending on the manufacturer, generally made of oak. This brandy reaches 80° alcohol (something that could undoubtedly revive even the deadest!), although it is reduced by adding water. Rum is made in different countries, mainly Caribbean, where each production house prepares rums with different characteristics.



UNIT OF MEASUREMENT

BOXES / LITERS / UNITS

PRODUCING STATES

CAPITAL DISTRICT, MIRANDA, LARA

TARIFF DESCRIPTION

RUM AND OTHER SPIRITS FROM
DISTILLATION, AFTER FERMENTATION,
SUGAR CANE PRODUCTS

OFFERED QUANTITY

2,772,307



FOOD

Product:

CHANCACA

PANEL

CODE: 1701.14.00.10

It is a raw, unrefined sugar with a high molasses content and tends to be darker, because it contains impurities. Its only ingredient is sugar cane juice. Since it is not refined or chemically processed, it retains its nutrients. This same product provides appreciable amounts of vitamin A, like others from group B, C, D and E. Therefore, it could be said that it contains 5 times more minerals than brown sugar and 50 times more minerals than the white sugar to which we are accustomed.



UNIT OF MEASUREMENT

TONS

PRODUCING STATES

ARAGUA, CARABOBO, COJEDES, GUÁRICO,
MIRANDA, TACHIRA

TARIFF DESCRIPTION

CHANCACA (PANELA, SCRATCHING)

OFFERED QUANTITY

2



FOOD



Product:

COCOA

in grain

CODE: 1801.00.00.19

It is a bean from the plant called theobroma cacao from which the cocoa solids are extracted, being the main base of chocolate.

Cocoa cultivation, as an agroforestry system, requires larger trees that at the same time provide wood and other products such as latex; It is located in the humid tropical forest (bht) and very humid tropical forest (bmht)

from sea level to 100 meters above sea level in the states of Sucre, Miranda, and Delta Amacuro.



TARIFF DESCRIPTION

OTHERS

UNIT OF MEASUREMENT

TONS / BAGS

PRODUCING STATES

MIRANDA, CAPITAL DISTRICT, LARA, ARAGUA,

OFFERED QUANTITY

1417.42



FOOD



Product:

BUTTER COCOA

CODE: 1804.00.00.00

Also known as julri oil; It is a natural edible fat that comes directly from the cocoa bean which is extracted during the chocolate making process.

Its separation process begins during the pressure applied to the cocoa mass. This contains a soft chocolate aroma and flavor.

**TARIFF DESCRIPTION**

BUTTER, FAT AND COCOA OIL.

UNIT OF MEASUREMENT

TONS

PRODUCING STATES

CAPITAL DISTRICT

OFFERED QUANTITY

260 Tons per year



FOOD

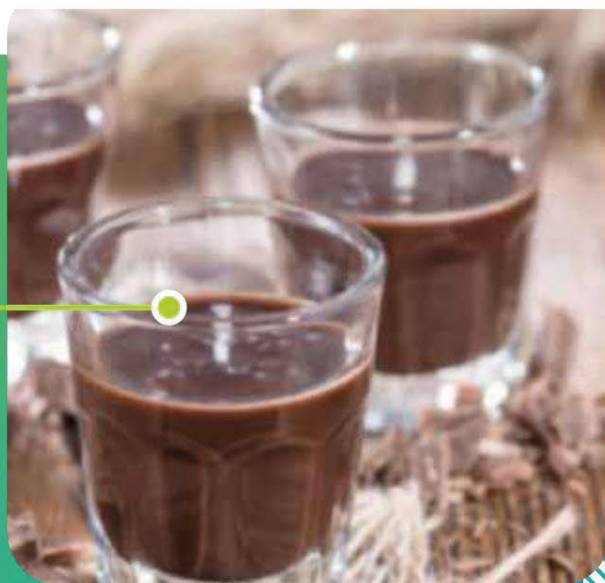


Product:

COCOA LIQUOR

CODE: 1803.10.00.00

Starting from the fermentation, roasting and refining process of cocoa seeds, a liquid called chocolate liquor is obtained. It is then understood that cocoa liquor is pure chocolate in liquid form and is basically composed of two main ingredients butter or cocoa fat and dry cocoa. Without this it is not possible to make any type of chocolate, it does not contain any type of alcohol, its creation starts from the chocolate factories maintaining quality control.



TARIFF DESCRIPTION

WITHOUT DEGREASING

UNIT OF MEASUREMENT

TONS

PRODUCING STATES

CAPITAL DISTRICT

OFFERED QUANTITY

120 TONS ANNUAL



FOOD



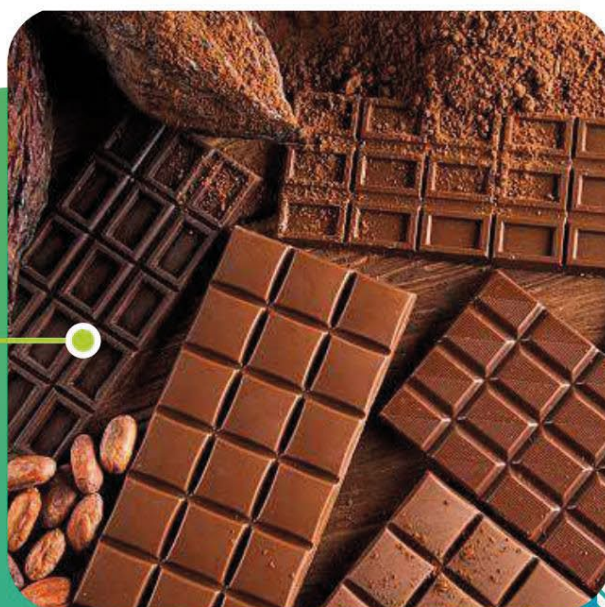
Product:

CHOCOLATE

in bar

CODE: 1806.32.10.00

The final product of chocolate is a food that is obtained by mixing two products that are derived from the manipulation of cocoa seeds, with cocoa mass or cocoa butter, resulting in the chocolate bar. which is a candy that is mainly based on chocolate, being differentiated from bulk chocolate produced and used for commercial use or individual portions.



TARIFF DESCRIPTION

CHOCOLATE.

UNIT OF MEASUREMENT

TONS

PRODUCING STATES

LARA

OFFERED QUANTITY

78 TONS ANNUAL



FOOD

Product:

STICKS CHOCOLATE

CODE: 1806.32.20.00

It is a stick-shaped cookie with vanilla flavor, covered in chocolate, generally used for snacks.



UNIT OF MEASUREMENT

TONS / BOXES

PRODUCING STATES

LARA

TARIFF DESCRIPTION

OTHER PREPARATIONS

OFFERED QUANTITY

2.26





FOOD

Product:

THE REST PREPARATIONS

CODE: 1806.90.00.00



UNIT OF MEASUREMENT
TONS
PRODUCING STATES
LARA
TARIFF DESCRIPTION
THE OTHERS
OFFERED QUANTITY
38.61





FOOD

Product:

MELTED CHEESE

TO SPREAD

CODE: 0406.30.00.00

It is a dairy derivative made from cheese, in addition to emulsifiers, saturated vegetable oils, extra salt, food coloring, whey or sugar.



TARIFF DESCRIPTION

MELTED CHEESE, EXCEPT GRATED OR IN DUST

UNIT OF MEASUREMENT

TONS / BOXES

PRODUCING STATES

ZULIA

OFFERED QUANTITY

8.13



FOOD



Product:

CONDENSED MILK

CODE: 0402.99.00.10

It is milk that has been totally or partially skimmed, heated under vacuum until three-quarters of the water is eliminated and to which a large amount of sugar is added, resulting in a thick finished product, with a long shelf life as long as it remains sealed in a container. container that maintains its room temperature, does not need refrigeration.



TARIFF DESCRIPTION

Condensed milk

UNIT OF MEASUREMENT

BOXES

PRODUCING STATES

LARA

OFFERED QUANTITY

2,349



FOOD



Product:

MARGARINE

CODE: 1517.10.00.00



TARIFF DESCRIPTION

MARGARINE, EXCLUDING LIQUID MARGARINE

UNIT OF MEASUREMENT

BOXES

PRODUCING STATES

MIRANDA

OFFERED QUANTITY

15,456



FOOD

Product:

MUNGO BEANS

GREEN

CODE: 071331

The Chinese bean is a tropical-subtropical legume consumed as a vegetable, which has been planted in various regions of developing countries, where it represents almost half of the total protein in the diet.



TARIFF DESCRIPTION

The other Beans (of the species vigna mungus, Hepper or Vigna radiata).

UNIT OF MEASUREMENT

Tons

PRESENTATION

Sacks

OFFERED QUANTITY

11,622 Tons per year



FOOD

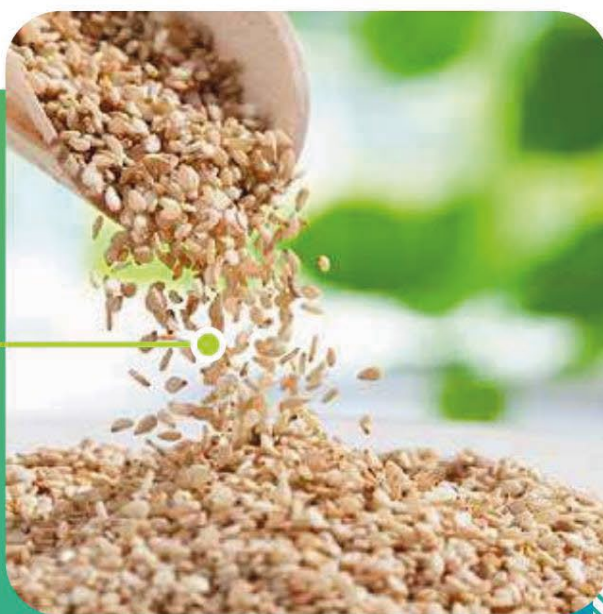


Product:

SESAME

CODE: 120740

Sesame is a herbaceous plant abundant in roots with an angular and highly branched stem, with opposite leaves; Its flowers are reddish-white or yellow and its fruit is a capsule that contains a large number of tiny straw-colored seeds with a nutty flavor, from which a large amount of edible oil with a pleasant flavor can be extracted.



TARIFF DESCRIPTION

Other sesame seeds

UNIT OF MEASUREMENT

Tons

PRESENTATION

Sacks

OFFERED QUANTITY

2,022 Tons per year



FOOD

Product:

TONKA BEANS

CODE: 1211.90.90.99.

It is the seed of the *Dipteryx odorata* tree, of the Fabaceae family, native to the lands bathed by the Orinoco in tropical America. They are elongated seeds, with a size that usually does not exceed two centimeters, covered by a rough black layer, which hides a lighter-colored interior with a hard rubbery texture like a shell. It has a penetrating aroma with different nuances that may remind you of other spices.



TARIFF DESCRIPTION

Tonka beans.

EXPORTING STATES

Carabobo.

UNIT OF MEASUREMENT

Kilograms.

PRESENTATION

Sacks

EXPORTING COMPANIES

One (1) exporting company

EXPORTABLE OFFER APPROX.

\$210,000.00 (2020).

OFFERED QUANTITY

30 Tons per year



FOOD

Product:

SEAWEED

CODE: 1212.29.00.00.

Seaweed are aquatic plants that live on the seabed. These plants can be assured that they are truly wild, maintaining all 100% natural properties for life. Seaweed is classified within a group of primitive vegetables, endowed with pigments that are classified as blue, green, yellow, red or brown. These live and develop in fresh, salty or brackish waters. In terms of size, they can be microscopic or giant (like Laminarias), measuring more than 50

meters.

TARIFF DESCRIPTION

Others.

EXPORTING STATES

New Sparta

UNIT OF MEASUREMENT

Kilograms.

PRESENTATION

35 KG bags (+/- 2)

EXPORTING COMPANIES

One (1) exporting company

EXPORTABLE OFFER APPROX.

\$33,000.00 (2020).

OFFERED QUANTITY

3 Tons per year



FOOD

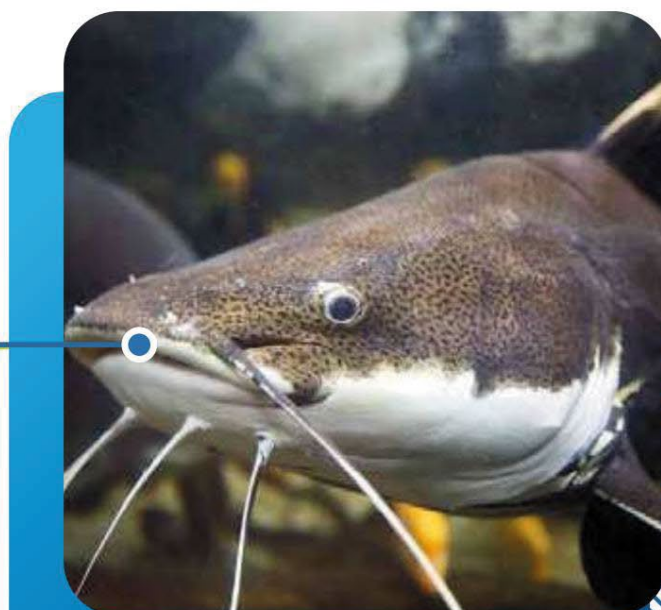


Product: CATFISH

CODE: 0303.29.00.00

It is a species found in Venezuela with a high level of protein, it can be classified into four groups while they are in the hatchery: fish that produce offspring; newborn fish; minnows; and marketable fish, it can also be caught in a traditional way in aquatic ecosystems where fresh water is abundant, as is the case of the Orinoco River.

Catfishes (catfish marinus, arius herzbergii, arius proops, cathorops spixii, arius rugis



pinnis): this species is very abundant in the Gulf of Venezuela and off the Orinoco Delta. Its origin is from both artisanal and industrial fishing, with the state of Zulia being the entity that reports the highest production.

UNIT OF MEASUREMENT	
TONS	
PRODUCING STATES	
LARA, ARAGUA	
TARIFF DESCRIPTION	
OTHERS	
OFFERED QUANTITY	
207.38	



FOOD



Product:

COPORO-BOCACHICO

CODE: 0302.89.90.00

It is a freshwater fish, it can be found in areas that have a tropical climate such as Venezuela, they live in places such as swamps and rivers, the largest population of this species can be found in the Magdalena River, many fishermen call it the sucker fish.



UNIT OF MEASUREMENT

TONS

PRODUCING STATES

LARA, ARAGUA

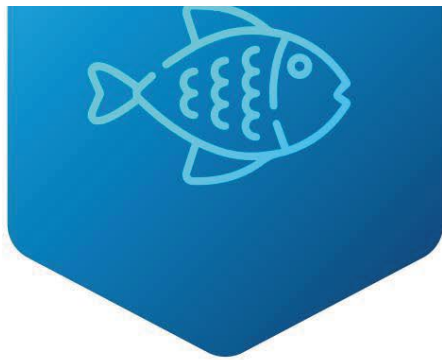
TARIFF DESCRIPTION

OTHERS

OFFERED QUANTITY

207.38





SECTOR

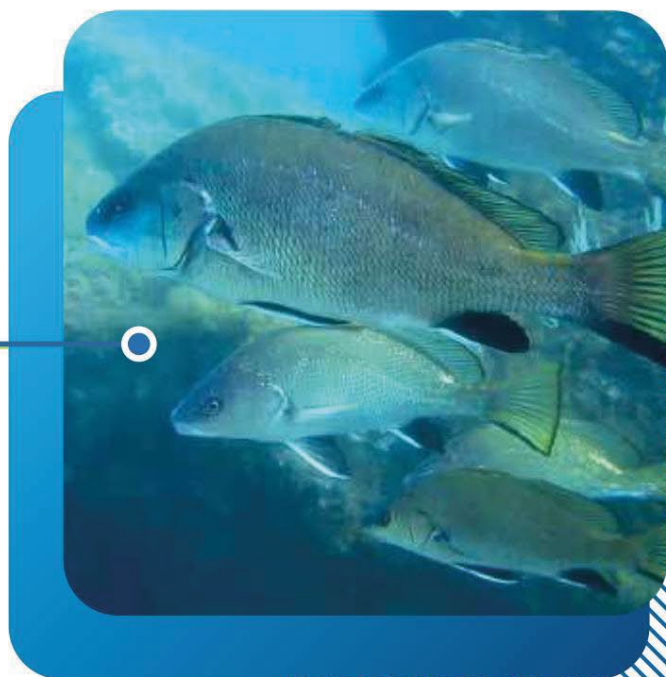
FOOD

Product: **CORVINAS**

CODE: 0303.89.10.00

It is a white fish found in salt water, it is very rich due to its fat percentage that is 2.5% higher than other blue fish such as salmon and tuna.

Curvina (cynoscion virescens; cynoscion acoupa; cynoscio similis). This species is very abundant in the Gulf of Paria, as well as in the Gulf of Venezuela and on the Unare platform.



UNIT OF MEASUREMENT	
TONS	
PRODUCING STATES	
ZULIA, LARA, MERIDA	
TARIFF DESCRIPTION	
Croakers (Micropogonias furnieri)	
OFFERED QUANTITY	
48,339	

www.bancoex.gob.ve



SECTOR

FOOD

Product: **PRAWNS**

CODE: 0306.16.10.90

It is a decapod crustacean, which lives on sandy beaches and in the mouths of rivers. It provides essential nutrients for the body due to its high protein, omega 3 and fatty acid content. It is used in the culinary arts and cocktails.

**UNIT OF MEASUREMENT**

TONS

PRODUCING STATES

NEW SPARTA

TARIFF DESCRIPTION

OTHERS

OFFERED QUANTITY

4,448

www.bancoex.gob.ve



SECTOR

FOOD

Product: GUANAPO

CODE: 0303.89.90.00

It is a highly demanded fish for its amount of meat and little fat. This species measures approximately 30cm in length, with a light reddish dorsal and pectoral fin, and a forked and reddish tail.

**UNIT OF MEASUREMENT**

TONS

PRODUCING STATES

ZULIA

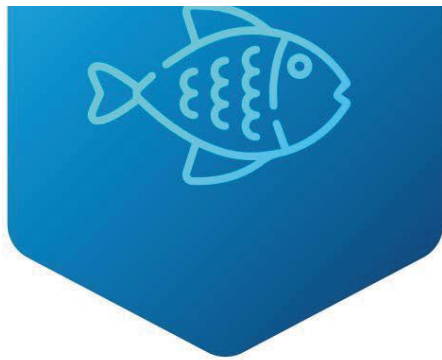
TARIFF DESCRIPTION

OTHERS

OFFERED QUANTITY

10.18

www.bancoex.gob.ve



SECTOR

FOOD

Product: **SHRIMP**

CODE: 0306.16.10.10

It belongs to the family of marine crustaceans, its characteristic is a small decapod, very similar to the shrimp, but with a laterally compressed body and very long antennae, often reddish brown or bluish green.

Shrimp. (*Penaeus smytti*; *Penaeus brasiliensis*): these species are widely distributed in national waters, although there is greater abundance in the area of the Gulf of Venezuela, the Gulf of Paria, the Unare Platform, the Orinoco Delta and the Atlantic margin.

Commercial shrimp farming in Venezuela begins at the end of the decade

UNIT OF MEASUREMENT
TONS

PRODUCING STATES
ZULIA, CAPITAL DISTRICT, ANZOATEGUI, MÉRIDA, FALCON

TARIFF DESCRIPTION
SHRIMP

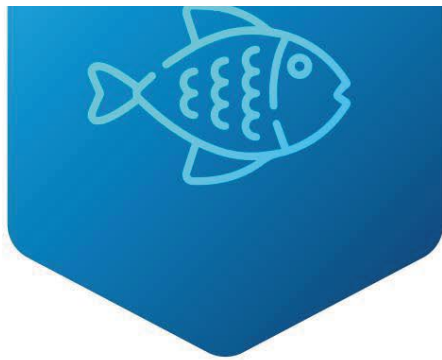
OFFERED QUANTITY
1332,397



from the 90s with around 8 active production units, consolidating itself as an important economic activity between the years 2006 - 2015 with 32 farms dedicated to its production and marketing.

Currently there are 38 companies with approximately 12.0 thousand hectares of swimming pools distributed in the states of Trujillo, Anzoátegui, Sucre, Nueva Esparta, Mérida, Falcón and Zulia, of which around 11.0 thousand hectares are located in the west, mainly in the state zulia, and a smaller proportion in falcón.

www.bancoex.gob.ve



SECTOR

FOOD

Product:
TAHALI

CODE: 0303.89.90.00



UNIT OF MEASUREMENT

TONS

PRODUCING STATES

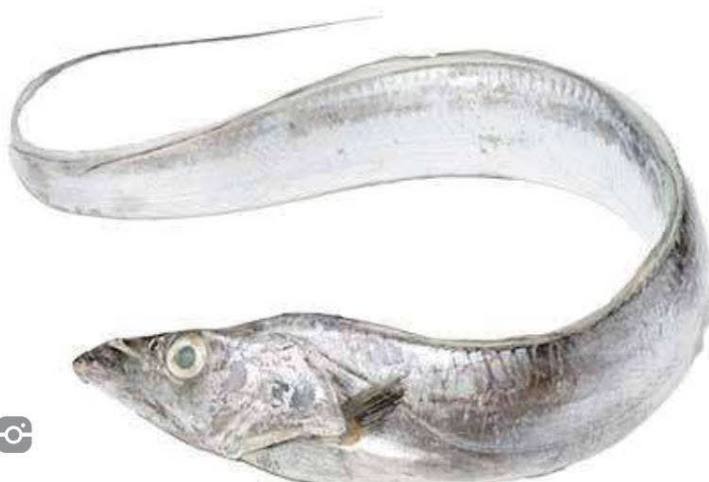
PORTUGUESE, MÉRIDA, FALCON

TARIFF DESCRIPTION

OTHERS

OFFERED QUANTITY

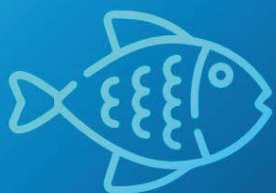
1636,476



www.bancoex.gob.ve



FOOD



Product:

CRAB

PREPARED OR PRESERVED (NON-SMOKING)

CODE: 160510

"Marine crustacean that has a flattened, oval-shaped body; it is covered by a shell, its size is usually small, no larger than a medium-sized stone and its color tends to be reddish or brown, the front legs larger and ending in a of tweezers.



PRODUCING STATES

ZULIA, CAPITAL DISTRICT, CARABOBO, LA GUAIRA

UNIT OF MEASUREMENT

TONS

TARIFF DESCRIPTION

CRAB (EXCEPT MACRUROS)

OFFERED QUANTITY

3,746 Tons per year



FOOD

Product:

OIL OF ALMONDS,

PALM OR BABASSU, ROUGH

CODE: 151321

Palm kernel oil is obtained from the kernel of the fruit of the oil palm (*elaeis guineensis*). It is one of the most used essential oils for its multiple natural properties, which provide hydration and other benefits for the skin and even the hair.



UNIT OF MEASUREMENT

TONS

PRODUCING STATES

ZULIA

TARIFF DESCRIPTION

CRUDE OILS

OFFERED QUANTITY

5,438 TONS



FOOD



Product:

SAUCE TOMATO

CODE: 2103.20.10.00

It is a tomato sauce or paste made from the pulps cooked until obtaining a thick consistency, to which some spices are added to improve its flavor, thus giving the finished product for human consumption.

**UNIT OF MEASUREMENT**

TONS

PRODUCING STATES

MIRANDA

TARIFF DESCRIPTIONIN IMMEDIATE CONTAINERS
LESS THAN OR EQUAL TO 1 KG**OFFERED QUANTITY**

840 TONS



FOOD



Product:

CORNMEAL

CODE: 110220

Corn flour is the powder from grinding the grains or seeds of an ear of corn. It is a source of carbohydrates, containing more than 66 grams of carbohydrates per 100 grams of product. It is a positively high source of fiber, which makes it a food suitable for a healthy and varied diet.



UNIT OF MEASUREMENT

TONS

PRODUCING STATES

MIRANDA

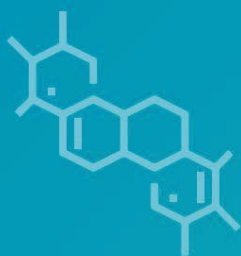
TARIFF DESCRIPTION

CORNMEAL

OFFERED QUANTITY

2,793 TONS





Product:

FERTILIZER - UREA

CODE: 310210

Urea is a stable organic fertilizer that can improve the quality of your soil, providing nitrogen to your plants is one of the relatively inexpensive fertilizers currently on the market, with 46% concentrated nitrogen. It can be marketed in the pearlized mode, which is for use in fertigation, and in the granulated mode, which consists of direct application to the soil.

**UNIT OF MEASUREMENT**

TONS

PRODUCING STATES

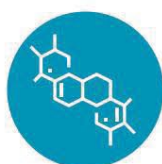
MIRANDA

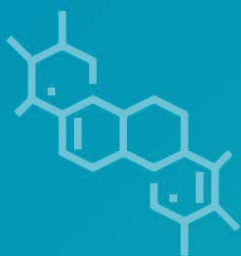
TARIFF DESCRIPTION

UREA, EVEN IN AQUEOUS SOLUTION

OFFERED QUANTITY

272,759 TONS





Product:

UREA MIXTURES

CODE: 310280

Urea mixtures with ammonium nitrate is a liquid fertilizer solution that is made by combining urea, ammonia and nitric acid. Nitrogen is the most important nutrient for crop production. Nitrogen fertilizer is responsible for the production of amino acids proteins

and indirectly supports the production of vitamin B. Nitrogen is the main factor in improving plant growth, development and yield of all crops. It consists of direct application to the ground.

UNIT OF MEASUREMENT

TONS

PRODUCING STATES

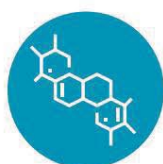
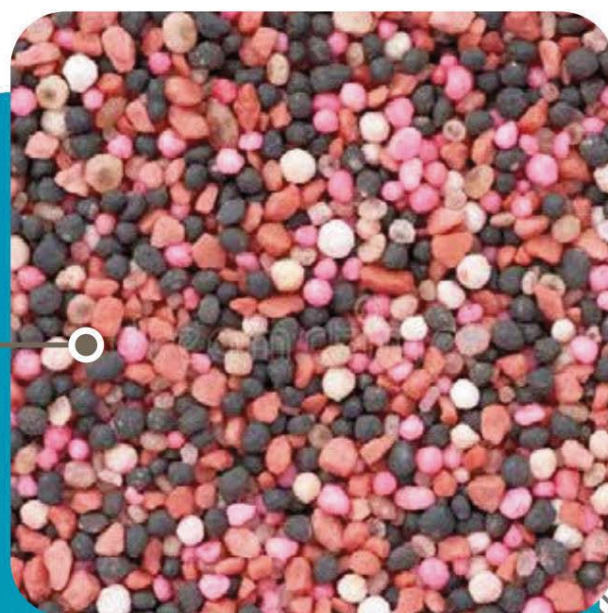
MIRANDA

TARIFF DESCRIPTION

MIXTURES OF UREA WITH AMMONIUM NITRATE IN AQUEOUS OR AMMONIA SOLUTION

OFFERED QUANTITY

272,759 TONS



PLASTIC AND ITS MANUFACTURES

Product: PLANFON PROFILE OF PLASTIC

CODE: 3925.90.90.00

It is a false ceiling that is used aesthetically, acoustically or to have easy access to the facilities in a certain area. It comes in different textures and colors, and is supported by a galvanized steel system called a suspension. They are used to make false ceilings in bathrooms, kitchens, hallways, and rooms of homes or apartments, also in the ceilings of offices, shopping centers, hospitals, hotels, stores, etc.



UNIT OF MEASUREMENT
TONS

PRODUCING STATES
ZULIA

TARIFF DESCRIPTION
OTHERS

OFFERED QUANTITY
838,700 UNITS



PLASTIC AND ITS MANUFACTURES

Product:

CLING FILM SILICONIZED

CODE: 3920.20.19.00

Sheet of polyester film coated with a thin layer of transparent silicone. This sheet has a virtual absence of migration, that is, the transfer of silicones or other substances from the non-stick film to the material to be protected. It serves to keep food fresh for longer.



UNIT OF MEASUREMENT
TONS

PRODUCING STATES
MIRANDA

TARIFF DESCRIPTION
OTHERS

OFFERED QUANTITY
203,849 SQUARE METERS

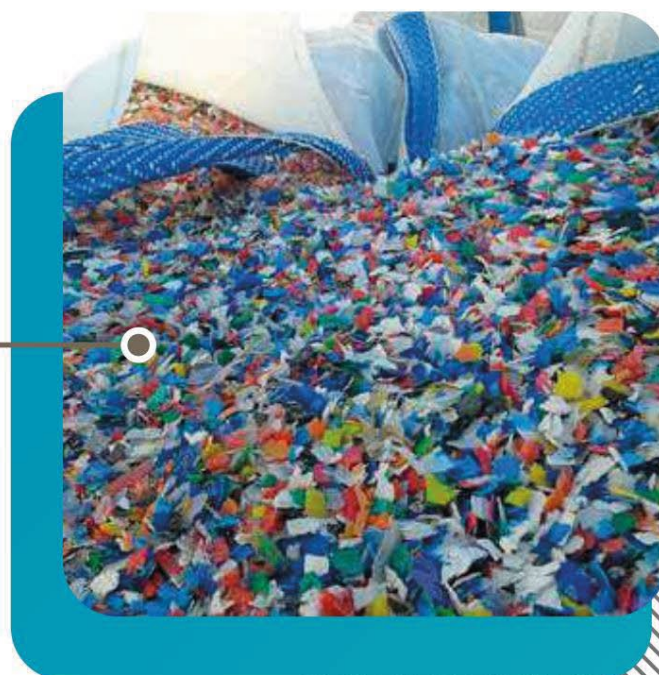


PLASTIC AND ITS MANUFACTURES

Product: PLASTIC RECOVERED

CODE: 3901.90.90.00

Plastic recycling is a very useful practice to reduce solid waste found in public areas or landfills, as it allows for separation, cleaning, pelletizing, molding, injection molding, compression molding and thermoforming. Thus giving another usable product.



UNIT OF MEASUREMENT	
TONS	
PRODUCING STATES	
ZULIA, TACHIRA	
TARIFF DESCRIPTION	
OTHERS	
OFFERED QUANTITY	
532.10 TONS	





RUBBER AND ITS MANUFACTURES

Product: GRANULE RUBBER

CODE: 4004.00.00.00

Particle made from rubber, which is obtained from waste from products that are made from the same polymer as tires, which has molecular structures that are characterized by their permeability, durability, rebound and cushioning against impact.



UNIT OF MEASUREMENT	
TONS	
PRODUCING STATES	
ARAGUA	
TARIFF DESCRIPTION	
WASTE, WASTE AND CUTTINGS, OF UNHARDENED RUBBER, WHETHER OR NOT IN POWDER OR GRANULES.	
OFFERED QUANTITY	
1.44 TONS	





TEXTILE FIBERS, FABRICS AND CLOTHING

Product:

FABRICS DENIM

CODE: 520942

The denim fabric is made from 100% cotton and has a diagonal texture. It is made up of warp threads that run along the length of the fabric vertically.

It is a very rigid fabric to the touch when it has not been finished, it usually always undergoes a washing process.



UNIT OF MEASUREMENT
TONS

PRODUCING STATES
ARAGUA

TARIFF DESCRIPTION
DENIM FABRICS

OFFERED QUANTITY
628 TONS





TEXTILE FIBERS, FABRICS AND CLOTHING

Product: FABRICS OF COTTON

CODE: 520912

Cotton fabrics are fine, soft, all-natural fabrics that are easy to dye and wash. With cotton, you can work and spin magnificent garments, thanks to its properties; It can resist high temperatures, has color fastness to washing, sweat, light and dry and wet rubbing.



UNIT OF MEASUREMENT

TONS

PRODUCING STATES

ARAGUA

TARIFF DESCRIPTION

OF TWILL LIGAMENT, INCLUDING THE CROSS, OF A COURSE LESS THAN OR EQUAL TO 4.

OFFERED QUANTITY

344 TONS



TEXTILE FIBERS, FABRICS AND CLOTHING

Product:

FABRIC

NON-WOVEN 1

CODE: 560312

Unwoven is a type of textile made up of thousands of fibers that are joined together, but are not woven. They are textiles composed of fibers or filaments joined together by different mechanisms that can be a thermal, chemical or mechanical union through pressure.



UNIT OF MEASUREMENT

TONS

PRODUCING STATES

MIRANDA

TARIFF DESCRIPTION

WEIGHT GREATER THAN 25 G/M2 BUT LESS THAN EQUAL TO 70 G/M2:

OFFERED QUANTITY

219 TONS





TEXTILE FIBERS, FABRICS AND CLOTHING

Product:

FABRIC

NON-WOVEN 2

CODE: 560311

Unwoven is a type of textile made up of thousands of fibers that are joined together, but are not woven. They are textiles composed of fibers or filaments joined together by different mechanisms that can be a thermal, chemical or mechanical union through pressure.

**UNIT OF MEASUREMENT**

TONS

PRODUCING STATES

MIRANDA

TARIFF DESCRIPTION

WEIGHT LESS THAN OR EQUAL TO 25 G

OFFERED QUANTITY

121 TONS





TEXTILE FIBERS, FABRICS AND CLOTHING

Product:
**SHIRTS
OF COTTON**

CODE: 62052092

lack



UNIT OF MEASUREMENT

TONS

PRODUCING STATES

THE GUAIRA

TARIFF DESCRIPTION

lack

OFFERED QUANTITY

121 TONS





SECTOR
LEATHER AND ITS
MANUFACTURES

Product:
**CRUPONS,
BOVINE SKIRTS**
(LEATHERS AND SKINS)

CODE: 410190

The beef brisket is about 10 square feet, thickness 1.8-2mm. Ideal for making card holders, wallets and other craft work.



UNIT OF MEASUREMENT

TONS

PRODUCING STATES

CARABOBO

TARIFF DESCRIPTION

OTHERS, INCLUDING CRUPONS,
HALF CRUPONS AND SKIRTS

OFFERED QUANTITY

5,599 TONS





SECTOR

LEATHER AND ITS MANUFACTURES

Product:

LEATHER AND SKINS ROUGH BOVINE

CODE: 410150

Bovine leather has been used since ancient times to dress people and today it is considered a quality product. Most used for making bags, this type of leather is taken from the skin of cows.

It is usually of very good quality and very versatile, but, as it is made from the skin of a non-domestic animal, it usually has stretch marks, scratches and holes.



UNIT OF MEASUREMENT
TONS

PRODUCING STATES
CARABOBO

TARIFF DESCRIPTION
WHOLE HIDES AND SKINS, WITH A UNIT WEIGHT GREATER THAN 16 KG.

OFFERED QUANTITY
3,825 TONS

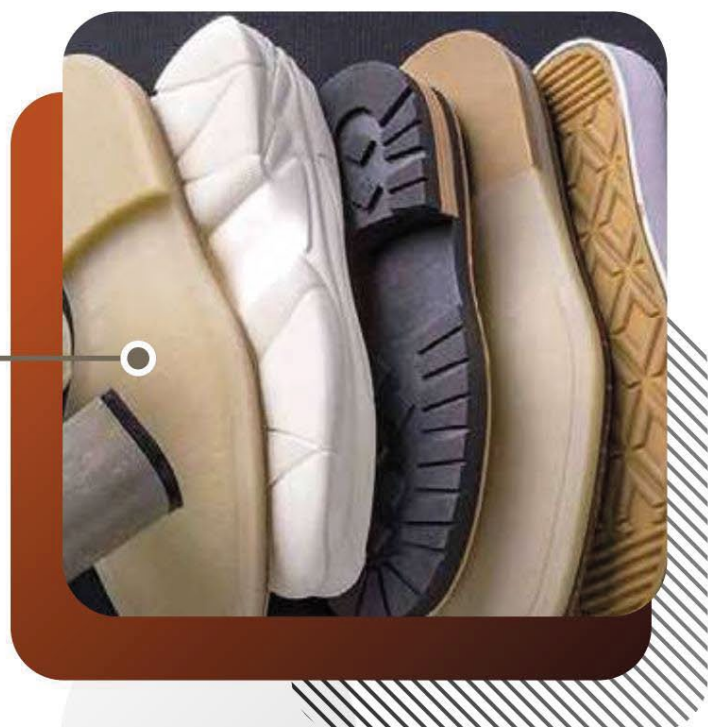




Product:
**FOOTWEAR WITH SOLES
OF RUBBER**

CODE: 640399

Footwear with rubber soles are very light and flexible, it is one of the most used materials in conventional shoes. These soles are made from rubber, a plant material that has great durability and resistance to friction, making them have great grip on the ground. That is why they are usually produced for mountain shoes and work boots, and thus avoid accidents due to falls.

**UNIT OF MEASUREMENT**

TONS

PRODUCING STATESCAPITAL DISTRICT, BOLIVAR, LA GUAIRA,
DELTA AMACURO**TARIFF DESCRIPTION**WHOLE HIDES AND SKINS, WITH A UNIT WEIGHT
GREATER THAN 16 KG.**OFFERED QUANTITY**

21,451 TONS





MACHINES AND TEAMS

Product: **WATER FILTERS**

CODE: 842121

A water filter is a device through which water passes to filter and retain impurities. Some of these elements are sand, mud, rust, dust, iron, high amounts of chlorine and bacteria, among others.

**UNIT OF MEASUREMENT**

TONS

PRODUCING STATES

CAPITAL DISTRICT

TARIFF DESCRIPTION

TO FILTER AND PURIFY WATER

OFFERED QUANTITY

6 TONS





MACHINES AND TEAMS

Product: MACHINES AND APPARATUS TO FILTER GASES

CODE: 842123

They are the machines that allow the finest filtration of impurity particles in industrial gases, such as, for example, acetylene, argon, oxygen, hydrogen, methane, carbon dioxide, helium, compressed air and ethylene. This protects downstream equipment and devices. Gas filters.

UNIT OF MEASUREMENT
TONS

PRODUCING STATES
CAPITAL DISTRICT

TARIFF DESCRIPTION
TO FILTER LUBRICANTS OR FUEL IN IGNITION ENGINES SPARK OR COMPRESSION

OFFERED QUANTITY
37 TONS





MACHINES AND TEAMS

Product: TRACTOR RADIATORS, AUTOMOBILE VEHICLES

CODE: 870891

Radiators are part of the system cooling of vehicles and tractors using air and liquid to reduce the high temperatures that generates combustion and reducing the heat of the antifreeze that comes from the engine.

UNIT OF MEASUREMENT

TONS

PRODUCING STATES

MIRANDA

TARIFF DESCRIPTION

RADIATORS AND THEIR PARTS

OFFERED QUANTITY

53 TONS





MACHINES AND TEAMS

Product:

**TRACTOR PARTS AND ACCESSORIES,
AUTOMOBILE VEHICLES**

CODE: 870899

They are parts, elements or devices that are added to the factory equipment of a vehicle to personalize it by improving its design, comfort and performance. You can find different types of tuning accessories for cars: aesthetics, safety, audio and mechanical.

UNIT OF MEASUREMENT

TONS

PRODUCING STATES

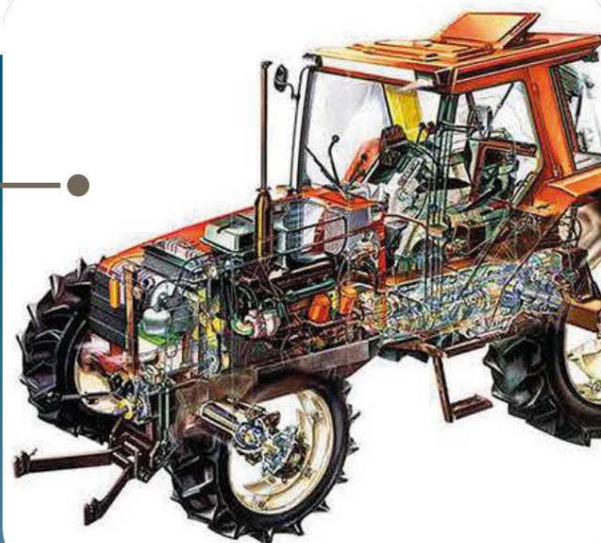
FALCON AND ZULIA

TARIFF DESCRIPTION

OTHERS

OFFERED QUANTITY

22 TONS



mailey.en.silva@bco.com





MACHINES AND TEAMS

Product:

**PARTS AND ACCESSORIES
OF BODYWORKS FOR TRACTORS**

CODE: 870829

The body is the basic structure of a car, which also houses passengers and cargo. It is an important element in terms of the aesthetics of the vehicle, since it determines the class of this vehicle.

UNIT OF MEASUREMENT
UNITS

PRODUCING STATES
CAPITAL DISTRICT

TARIFF DESCRIPTION
OTHERS

OFFERED QUANTITY
598 UNITS





MACHINES AND TEAMS

Product:

**LEAD ACCUMULATORS,
OF THE TYPES USED FOR STARTING
OF PISTON ENGINES**

CODE: 850710

The starter battery is an accumulator and provides electrical energy to the starter motor of a combustion engine. The battery is the part in charge of storing the current necessary for the operation of the car.

**UNIT OF MEASUREMENT**

TONS

PRODUCING STATES

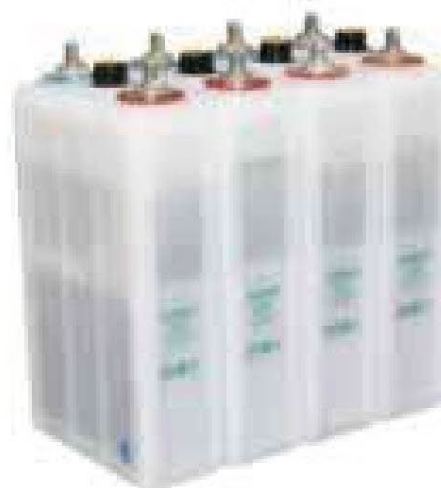
ARAGUA

TARIFF DESCRIPTION

OF LEAD, OF A KIND USED FOR
STARTING Plunger MOTORS
(PISTON)

OFFERED QUANTITY

3,449 TONS





MACHINES AND TEAMS

Product:

SWITCHES, DISCONNECTORS AND SWITCHES

CODE: 853650

Mechanical devices with a knob that can section electrical circuits, used in electrical panels, machines and equipment. These devices are available in a wide variety of sizes and configurations to fit each customer's specific needs.



UNIT OF MEASUREMENT

TONS

PRODUCING STATES

MIRANDA

TARIFF DESCRIPTION

THE OTHER SWITCHES,
DISCONNECTORS AND SWITCHES

OFFERED QUANTITY

20 TONS





MACHINES AND TEAMS

Product: PINS AND SOCKETS CURRENT

CODE: 853669

They are electrical parts that power any electrical device that is connected to it. Its operation is based on the passage of current through internal metal plates, located inside each hole, which when coming into contact with a plug close the circuit and transmit energy to the device. It is, so to speak, the female complement to the male plug and a way to facilitate, in a simple way, access to the electric current of any appliance or device that requires that connection for its operation.



UNIT OF MEASUREMENT

TONS

PRODUCING STATES

MIRANDA

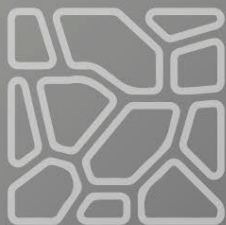
TARIFF DESCRIPTION

THE OTHER SWITCHES,
DISCONNECTORS AND SWITCHES

OFFERED QUANTITY

27 TONS





MANUFACTURES OF STONE

Product:

CLOTHES ASPHALT

CODE: 6807.90.00.00

It is an electrical element that powers any electrical device that is connected to it. Its operation is based on the passage of current through internal metal plates, located inside each hole, which when coming into contact with a plug close the circuit and transmit energy to the device. It is, so to speak, the female complement to the male plug and a way to facilitate, in a simple way, access to the electric current of any appliance or device that requires that connection for its operation.



UNIT OF MEASUREMENT

BOXES / UNITS

PRODUCING STATES

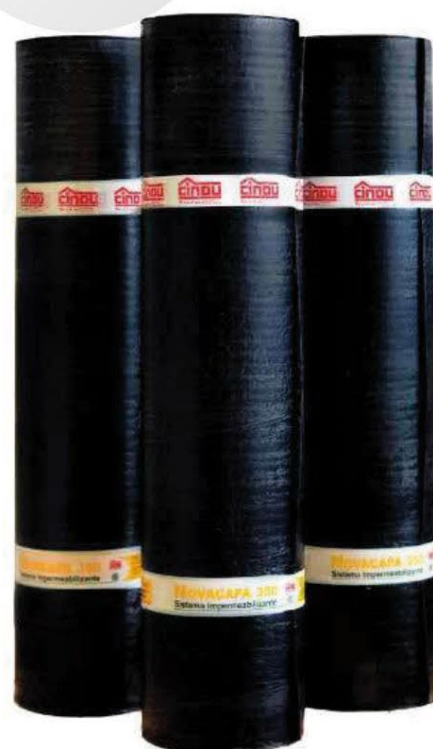
YOU FUCK

TARIFF DESCRIPTION

in rolls

OFFERED QUANTITY

61.34 TONS





MANUFACTURES OF STONE

Product:

ROOF TILES

ASPHALT

CODE: 6807.90.00.000

Asphalt shingles protect your roof from humid climates and rain. They are ideal for avoiding leaks and are suitable for all types of constructions. The asphalt shingle is made up of 3 high-quality layers, which make it a highly durable waterproof shingle solution.

They are manufactured based on fiberglass and mineral asphalt, their main composition has the following layers: fiber mesh structure, high weather resistance asphalt, layer of mineral granules.



UNIT OF MEASUREMENT
BOXES / UNITS
PRODUCING STATES
COJEDES, ARAGUA, ZULIA
TARIFF DESCRIPTION
The others
OFFERED QUANTITY
1.61 TONS





PRODUCTS

CERAMICS

Product:

BRICKS CLAY

CODE: 6904.10.00.00

It is a construction material, normally ceramic and with an orthohedral shape, whose most normal dimensions allow an operator to place it with just one hand. It is used in masonry for general construction.

**UNIT OF MEASUREMENT**

THOUSAND / UNITS

PRODUCING STATES

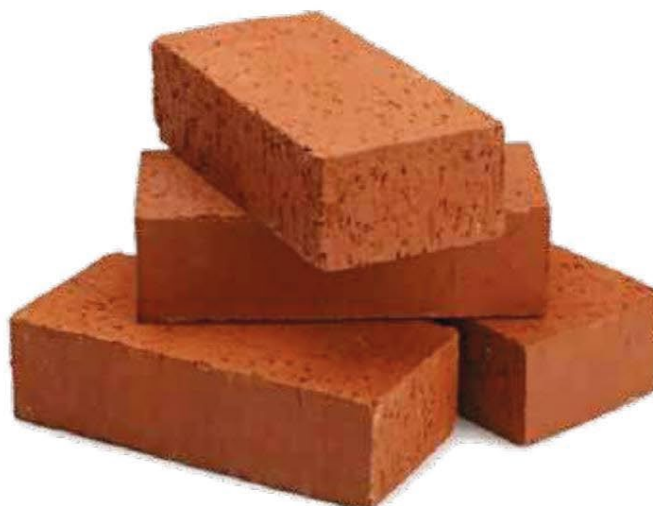
TACHIRA

TARIFF DESCRIPTION

construction bricks

OFFERED QUANTITY

1051100 THOUSAND / UNITS





GLASS AND MANUFACTURES OF GLASS

Product: PACKAGING OF GLASS

CODE: 7010.90.90.90

The glass container is inert, hygienic, it does not interfere with the flavor of food and drinks or the composition of perfumes and medicines, thus guaranteeing the original quality of its contents. or allows the transfer of oxygen or carbon dioxide, therefore, it does not alter the color or flavor of the contents of the container.

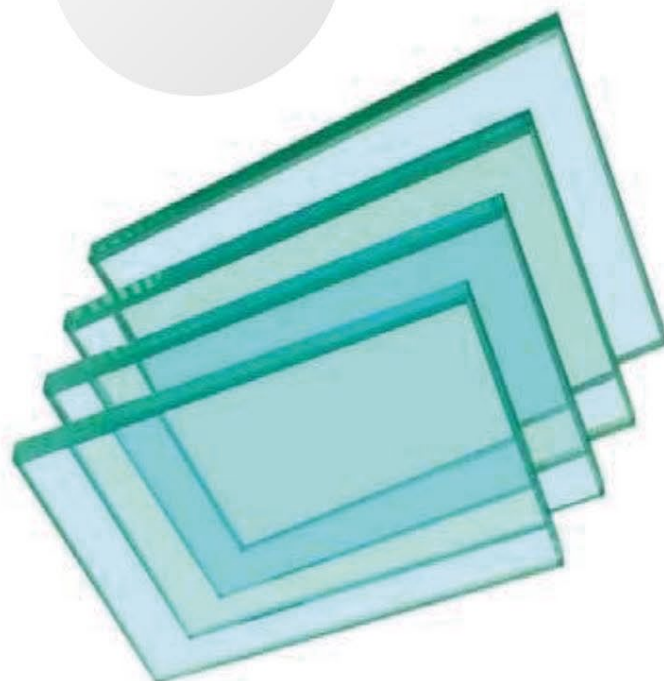


UNIT OF MEASUREMENT
BOXES / UNITS

PRODUCING STATES
CAPITAL DISTRICT, LARA, CARABOBO

TARIFF DESCRIPTION
The others

OFFERED QUANTITY
12026453 UNITS





MATERIALS OF CONSTRUCTION

Product:

CEMENTS UNSPRAYED "CLINKER"

CODE: 2523.10.00.00

Clinker is formed after calcining limestone and clay at a temperature between 1350 and 1450 °C. Clinker is the product of the kiln that is ground to make cement. The average particle diameter (or granulometry) of a typical cement is approximately 15 micrometers.

There are four main compounds in clinker that make up 90% or more of the weight of cement: tricalcium silicate, dicalcium silicate, tricalcium aluminate, tetracalcium ferritealuminate.



UNIT OF MEASUREMENT

BOXES / UNITS

PRODUCING STATES

BARQUISIMETO, ANZOATEGUI, MARACAIBO,
BOLIVAR

TARIFF DESCRIPTION

Unpulverized cements ("clinker")

OFFERED QUANTITY

111762 TONS



METALS AND THEIR MANUFACTURES

Product: **WASTE AND "SCRAP" WASTE**

CODE: 720421

Scrap is unwanted or useless materials. Scrap metal is also waste that has been handled inappropriately.



UNIT OF MEASUREMENT

TONS

PRODUCING STATES

MIRANDA, CAPITAL DISTRICT, ARAGUA

TARIFF DESCRIPTION

STAINLESS STEEL

OFFERED QUANTITY

8,693 TONS



METALS AND THEIR MANUFACTURES

Product: WASTE AND "SCRAP" WASTE

CODE: 720410

Scrap is unwanted or useless materials. Scrap metal is also waste that has been handled inappropriately.



UNIT OF MEASUREMENT

TONS

PRODUCING STATES

MIRANDA, CAPITAL DISTRICT, ARAGUA

TARIFF DESCRIPTION

CASTING WASTE AND SCRAP

OFFERED QUANTITY

8,685 TONS





METALS AND THEIR MANUFACTURES

Product: **WASTE AND "SCRAP" WASTE**

CODE: 720430

Scrap is unwanted or useless materials. Scrap metal is also waste that has been handled inappropriately.

UNIT OF MEASUREMENT

TONS

PRODUCING STATES

MIRANDA, CAPITAL DISTRICT, ARAGUA

TARIFF DESCRIPTION

IRON WASTE AND SCRAP
OR TIN-PLATED STEEL

OFFERED QUANTITY

9,097 TONS





METALS AND THEIR MANUFACTURES

Product:

**RAILROAD PRODUCTS OBTAINED
BY DIRECT REDUCTION OF MINERALS
IRON, IN PIECES, "PELLETS"**

CODE: 720310

They are obtained in a process that consists of agglomerating finely ground mineral into a concentrate by adding binders and a certain amount of water to give it the shape of spherical particles. Which are hardened by firing in rotary kilns.

UNIT OF MEASUREMENT

TONS

PRODUCING STATES

BOLIVAR

TARIFF DESCRIPTION

RAILROAD PRODUCTS OBTAINED
BY DIRECT REDUCTION OF MINERALS
OF IRON

OFFERED QUANTITY

360,603 TONS





METALS AND THEIR MANUFACTURES

Product:

**SPONGE FERROUS PRODUCTS,
OBTAINED BY ATOMIZATION
ROUGH CAST**

CODE: 720390

These products are obtained from minerals in pieces or in granular form. They have a metal content generally greater than 80% by weight and have a spongy structure (iron sponge). They are used in the manufacture of steel

UNIT OF MEASUREMENT

TONS

PRODUCING STATES

BOLIVAR

TARIFF DESCRIPTION

OTHERS

OFFERED QUANTITY

65,017 TONS



METALS AND THEIR MANUFACTURES

Product:

**INTERMEDIATE IRON PRODUCTS
OR NON-ALLOY STEEL, CONTAINING
CARBON**

CODE: 720719

They are the intermediate products where unalloyed steel is a type of carbon steel that contains less than 1.5% carbon. Carbon is the main alloying element of steel, and its content determines its mechanical properties.

Unalloyed steels have relatively low strength and ductility, but are easy to weld and machine. They are used in a wide range of applications, including construction, manufacturing and transportation.

UNIT OF MEASUREMENT

TONS

PRODUCING STATES

BOLIVAR

TARIFF DESCRIPTION

OTHERS

OFFERED QUANTITY

75,672 TONS



METALS AND THEIR MANUFACTURES

Product:

**INTERMEDIATE IRON PRODUCTS
OR NON-ALLOY STEEL, CONTAINING
CARBON**

CODE: 720720

They are the intermediate products where unalloyed steel is a type of carbon steel that contains less than 1.5% carbon. Carbon is the main alloying element of steel, and its content determines its mechanical properties.

Unalloyed steels have relatively low strength and ductility, but are easy to weld and machine. They are used in a wide range of applications, including construction, manufacturing and transportation.

UNIT OF MEASUREMENT

TONS

PRODUCING STATES

BOLIVAR

TARIFF DESCRIPTION

WITH A HIGHER CARBON CONTENT
OR EQUAL TO 0.25% BY WEIGHT

OFFERED QUANTITY

75,164 TONS





METALS AND THEIR MANUFACTURES

Product:

**WIRE OF IRON OR NON-ALLOY STEEL,
WINDED IN IRREGULAR COILS
"CROWNS"**

CODE: 721391

It is any type of thread, mainly made of iron or unalloyed steel, which is obtained by stretching the aforementioned metals and then rolling it into a spiral.



UNIT OF MEASUREMENT

TONS

PRODUCING STATES

BOLIVAR

TARIFF DESCRIPTION

CIRCULAR SECTION WITH DIAMETER I
LESS THAN 14 MM

OFFERED QUANTITY

32,140 TONS



METALS AND THEIR MANUFACTURES

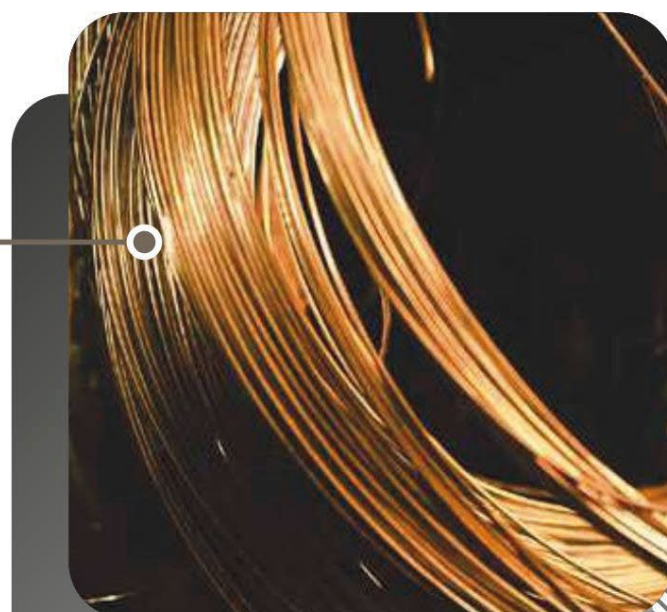
Product: INTERMEDIATE PRODUCTS OF IRON OR NON-ALLOY STEEL

CODE: 720711

It is used in a wide variety of applications, from electric motors to surgical instruments, table knives to machine tools.

This type of steel has extensive use in various applications. Unalloyed steel is a relatively inexpensive and easy material to manufacture, and has a wide range of properties. It is strong, ductile and resistant to corrosion.

In addition, it is easy to weld and machine.



UNIT OF MEASUREMENT

TONS

PRODUCING STATES

BOLIVAR

TARIFF DESCRIPTION

SQUARE OR CROSS SECTION
RECTANGULAR, WHICH WIDTH IS LESS THAN
DOUBLE THE THICKNESS

OFFERED QUANTITY

3,497 TONS



METALS AND THEIR MANUFACTURES

Product: FLAT PRODUCTS OF IRON OR NON-ALLOY STEEL

CODE: 720853

Flat iron products or flat steel products are those products made with a flat surface. It is used for the production of plates, strips, sheets and plates, working parts of rectangular cross section with a width greater than the thickness



UNIT OF MEASUREMENT

TONS

PRODUCING STATES

BOLIVAR

TARIFF DESCRIPTION

OF A THICKNESS GREATER OR EQUAL TO 3 MM
BUT LESS THAN 4.75 MM

OFFERED QUANTITY

868 TONS





METALS AND THEIR MANUFACTURES

Product: FLAT PRODUCTS OF IRON OR NON-ALLOY STEEL

CODE: 720838

Flat iron products or flat steel products are those products made with a flat surface. It is used for the production of plates, strips, sheets and plates, working parts of rectangular cross section with a width greater than the thickness



UNIT OF MEASUREMENT

TONS

PRODUCING STATES

BOLIVAR

TARIFF DESCRIPTION

OTHERS

OFFERED QUANTITY

808 TONS

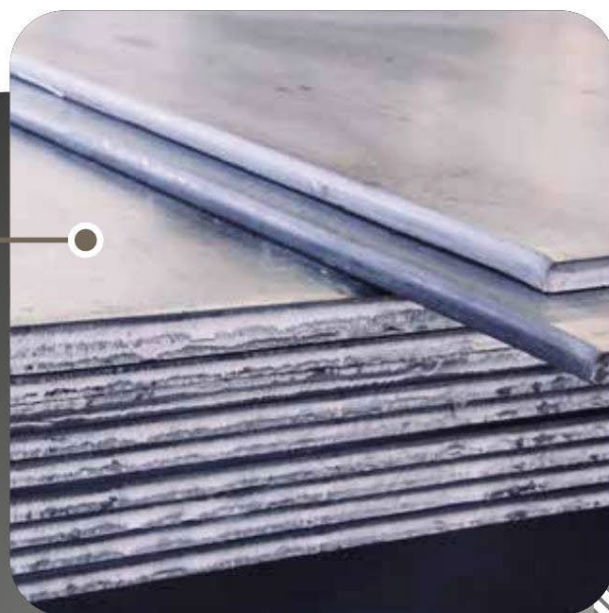


METALS AND THEIR MANUFACTURES

Product: FLAT PRODUCTS OF IRON OR NON-ALLOY STEEL

CODE: 720837

Flat iron products or flat steel products are those products made with a flat surface. It is used for the production of plates, strips, sheets and plates, working parts of rectangular cross section with a width greater than the thickness



UNIT OF MEASUREMENT

TONS

PRODUCING STATES

BOLIVAR

TARIFF DESCRIPTION

OF A THICKNESS GREATER OR EQUAL TO 4.75 MM
BUT LESS THAN OR EQUAL TO 10 MM

OFFERED QUANTITY

670 TONS



METALS AND THEIR MANUFACTURES

Product: FLAT PRODUCTS OF IRON OR NON-ALLOY STEEL

CODE: 720852

Flat iron products or flat steel products are those products made with a flat surface. It is used for the production of plates, strips, sheets and plates, working parts of rectangular cross section with a width greater than the thickness



UNIT OF MEASUREMENT

TONS

PRODUCING STATES

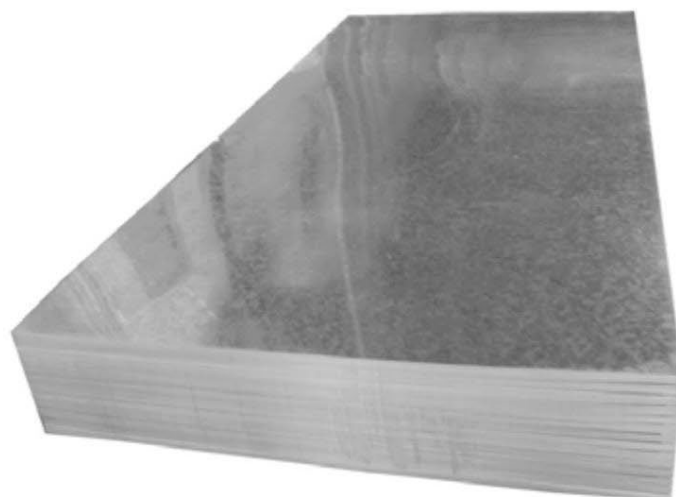
BOLIVAR

TARIFF DESCRIPTION

OF A THICKNESS GREATER OR EQUAL TO 4.75 MM BUT LESS THAN OR EQUAL TO 10 MM

OFFERED QUANTITY

1,226 TONS



METALS AND THEIR MANUFACTURES

Product:

UNALLOY ALUMINUM, RAW

CODE: 760110

It is a soft material, low resistance, low rigidity, light and highly ductile. improve For characteristics, alloys of aluminum with other metals their made. Unalloyed aluminum is less used in molded parts than in forged products.



UNIT OF MEASUREMENT

TONS

PRODUCING STATES

BOLIVAR

TARIFF DESCRIPTION

UNALLOY ALUMINUM

OFFERED QUANTITY

90,837 TONS



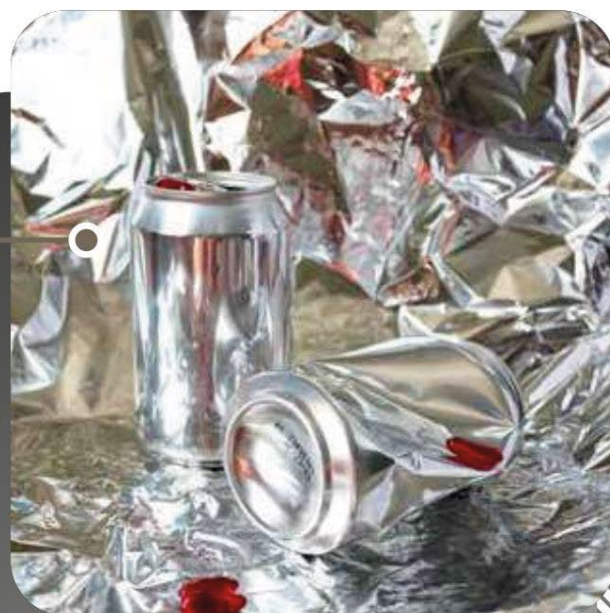


METALS AND THEIR MANUFACTURES

Product: ALUMINUM ALLOYS, RAW

CODE: 760120

It is a mixture of metallic materials, in this case, an aluminum alloy is a mixture of aluminum with other metals.



UNIT OF MEASUREMENT

TONS

PRODUCING STATES

ARAGUA

TARIFF DESCRIPTION

ALUMINUM ALLOYS 6 4 KG

OFFERED QUANTITY

28,523 TONS



METALS AND THEIR MANUFACTURES

Product:

**WASTE AND DEBRIS,
OF ALUMINUM**

CODE: 760200

Aluminum waste and scrap is an important source of raw materials for the aluminum industry. They are also used for the deoxidation and decarburization of steel baths.



UNIT OF MEASUREMENT

TONS

PRODUCING STATES

THE GUAIRA

TARIFF DESCRIPTION

WASTE AND SCRAP OF ALUMINUM.

OFFERED QUANTITY

9,065 TONS



METALS AND THEIR MANUFACTURES

Product: ALUMINUM WIRE UNALLOYED

CODE: 760511

It is a product obtained by continuous drawing of aluminum wire rod, which increases the homogeneity in mechanical properties and the accuracy in the wire gauge. Used in the manufacture of industrial rivets for stamping and shaping special parts.



UNIT OF MEASUREMENT

TONS

PRODUCING STATES

CARABOBO

TARIFF DESCRIPTION

WITH THE LARGEST DIMENSION OF THE SECTION
TRANSVERSAL GREATER THAN 7 MM

OFFERED QUANTITY

4,139 TONS



METALS AND THEIR MANUFACTURES

Product:
**ALLOY WIRE
OF ALUMINUM**

CODE: 760521

Aluminum alloy wires have the following strengths: lightness, electrical and thermal conductivity, ^{excellent} strong corrosion resistance and high ductility.



UNIT OF MEASUREMENT

TONS

PRODUCING STATES

CARABOBO

TARIFF DESCRIPTION

WITH THE LARGEST DIMENSION OF THE SECTION
TRANSVERSAL GREATER THAN 7 MM

OFFERED QUANTITY

231 TONS



METALS AND THEIR MANUFACTURES

Product: ALLOY WIRE OF ALUMINUM

CODE: 760529

Aluminum alloy wires have the following strengths: lightness, electrical and thermal conductivity, ~~strong~~ ^{excellent} corrosion resistance and high ductility.



UNIT OF MEASUREMENT	
TONS	
PRODUCING STATES	
CARABOBO	
TARIFF DESCRIPTION	
OTHERS	
OFFERED QUANTITY	
218 TONS	



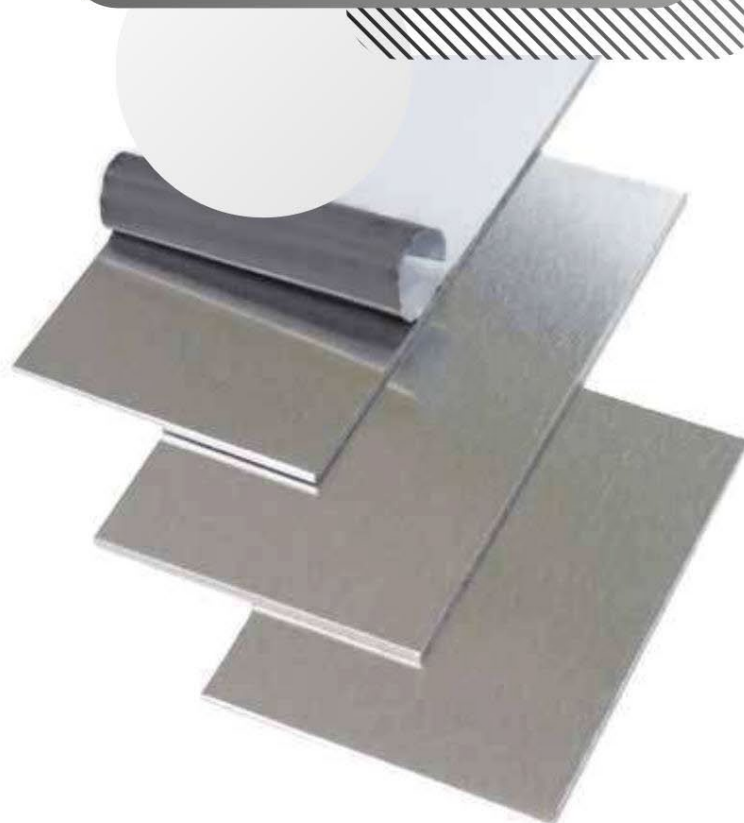
METALS AND THEIR MANUFACTURES

Product:

**SHEETS AND STRIPS, OF ALLOYS
OF ALUMINUM**

CODE: 760612

They are a product that, depending on its application, must be made of a certain alloy. The different aluminum alloys are obtained by combining aluminum with other elements. Aluminum alloys are alloys obtained from aluminum and other elements, generally copper, zinc, manganese, magnesium, silicon, iron, chromium, nickel, titanium, silver, tin and lead.



UNIT OF MEASUREMENT

TONS

PRODUCING STATES

ARAGUA

TARIFF DESCRIPTION

OF ALUMINUM ALLOYS

OFFERED QUANTITY

844 TONS





METALS AND THEIR MANUFACTURES

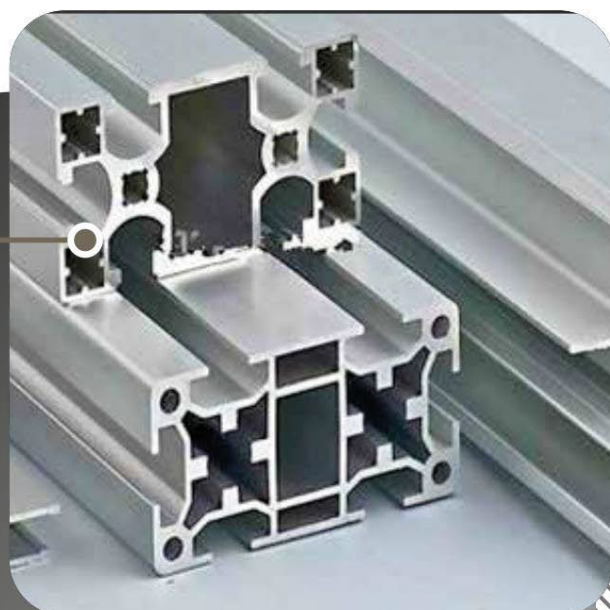
Product:

ALUMINUM SHEETS AND STRIPS UNALLOYED

CODE: 760691

Aluminum sheets are used for the construction of roofs, panels, etc. These have good mechanical resistance and great resistance to corrosion.

Aluminum strips are a deep aluminum product formed by processing pure aluminum, thin aluminum strips can be used in all aspects of our lives.



UNIT OF MEASUREMENT

TONS

PRODUCING STATES

ARAGUA

TARIFF DESCRIPTION

NON-ALLOY ALUMINUM

OFFERED QUANTITY

189 TONS



METALS AND THEIR MANUFACTURES

Product:
**CABLES, BRAIDS AND SIMILAR
ITEMS, OF ALUMINUM,
UNINSULATED FOR ELECTRICITY**

CODE: 761490

Electrical cables composed of uninsulated aluminum have the purpose of transporting electrical energy from one point to another. Depending on their final application, the cables can have different configurations, always basing their design on national and international regulations.



UNIT OF MEASUREMENT

TONS

PRODUCING STATES

CARABOBO, TACHIRA

TARIFF DESCRIPTION

OTHERS

OFFERED QUANTITY

349 TONS



METALS AND THEIR MANUFACTURES

Product:
**CABLES, BRAIDS AND SIMILAR ITEMS,
OF ALUMINUM, WITH STEEL CORE,
UNINSULATED FOR ELECTRICITY**

CODE: 761410

The steel core of the cable is the support of suitable size and consistency to offer firm support to the cords, so that, even at maximum load, the cord wires do not become crimped among themselves and has current capacity at temperature ambient of 25°C, conductor temperature of 75°C, solar emission 1kw/m2, absorption and emissivity coefficients 0.5, wind speed 610 mm/sec, at sea level and at 60

hz.



UNIT OF MEASUREMENT	
TONS	
PRODUCING STATES	
CARABOBO, TACHIRA	
TARIFF DESCRIPTION	
WITH STEEL SOUL	
OFFERED QUANTITY	
189 TONS	





METALS AND THEIR MANUFACTURES

Product:

**ALUMINUM POWDER, STRUCTURE
LAMINATE; ALUMINUM SCALES**

CODE: 760320

Aluminum powder is one of the presentations in which aluminum is worked. It is a silver powder that is obtained through metal powder metallurgy and is used in the metallization process of parts and

other components.



UNIT OF MEASUREMENT

TONS

PRODUCING STATES

CAPITAL DISTRICT

TARIFF DESCRIPTION

LAMINAR STRUCTURE POWDER; SCAMILLAS

OFFERED QUANTITY

308 TONS

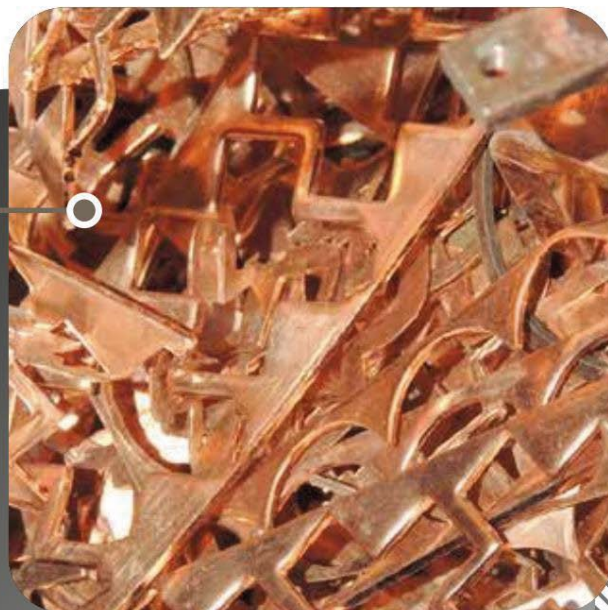


METALS AND THEIR MANUFACTURES

Product:
**WASTE AND DEBRIS,
COPPERMADE**

CODE: 740400

Copper waste and scrap is a leftover part of copper articles. They include waste or scrap copper/copper alloy.



UNIT OF MEASUREMENT

TONS

PRODUCING STATES

CAPITAL DISTRICT, LA GUAIRA, MIRANDA

TARIFF DESCRIPTION

WASTE AND SCRAP, COPPER.

OFFERED QUANTITY

16,702 TONS





METALS AND THEIR MANUFACTURES

Product:
ALLOYS BASED ON
COPPER-ZINC "BRASS", ROUGH
CODE: 740321

Brass, is an alloy of copper and zinc, can be modified to create a wide range of brasses with different properties, it is widely used for decoration applications in antique finishes

and oxidized.

**UNIT OF MEASUREMENT**

TONS

PRODUCING STATES

ARAGUA

TARIFF DESCRIPTION

BASED ON COPPER-ZINC (BRASS)

OFFERED QUANTITY

2,994 TONS





METALS AND THEIR MANUFACTURES

Product:
STRUCTURE POWDER
LAMINATE AND FLAMES,
COPPERMADE

CODE: 740620

The lamellar copper powder structure can be distinguished under a microscope. It is impalpable, often shiny, a little oily and is generally used as a pigment for paints.

**UNIT OF MEASUREMENT**

TONS

PRODUCING STATES

ARAGUA

TARIFF DESCRIPTION

LAMINAR STRUCTURE POWDER, FLAKES

OFFERED QUANTITY

789 TONS



METALS AND THEIR MANUFACTURES

Product:

SHEETS AND THIN STRIPS, OF COPPER ALLOYS

CODE: 741022

Sheets and strips of copper-based alloys are widely used in plumbing or electrical installations (electrical cables, largely

also measured in the coils of motors, etc.) due to their low electrical resistance.



UNIT OF MEASUREMENT

TONS

PRODUCING STATES

ARAGUA

TARIFF DESCRIPTION

OF COPPER ALLOYS

OFFERED QUANTITY

794 TONS





METALS AND THEIR MANUFACTURES

Product:
**IRON MINERALS
AND ITS CONCENTRATES,
UNAGLOMERATED**

CODE: 260111

Iron ores and their concentrates are rocks and minerals from which metallic iron can be extracted.

**UNIT OF MEASUREMENT**

TONS

PRODUCING STATES

BOLIVAR

TARIFF DESCRIPTION

UNAGLOMERATED

OFFERED QUANTITY

866,677 TONS





METALS AND THEIR MANUFACTURES

Product: **TIN MINERALS AND ITS CONCENTRATES**

CODE: 260900

Tin is a soft, silvery-white metal that does not dissolve in water. Metallic tin is used to line food, beverage and aerosol cans. It is present in brass, bronze, pewter and in some materials for soldering.



UNIT OF MEASUREMENT

TONS

PRODUCING STATES

CAPITAL DISTRICT, LA GUAIRA, CARABOBO

TARIFF DESCRIPTION

TIN MINERALS AND THEIR CONCENTRATES.

OFFERED QUANTITY

451 TONS





METALS AND THEIR MANUFACTURES

Product:

REFINED LEAD, RAW

CODE: 780110

It is a metal with excellent thermal and electrical conduction properties. On the Mohs scale, it has a hardness equal to 1.5. Lead is a common ingredient in the manufacture of ceramics, plastics and soldering alloys. Weapon ammunition

of fire (the tip of the bullets) and the Battery contacts are manufactured with lead in various alloy level.

UNIT OF MEASUREMENT

TONS

PRODUCING STATES

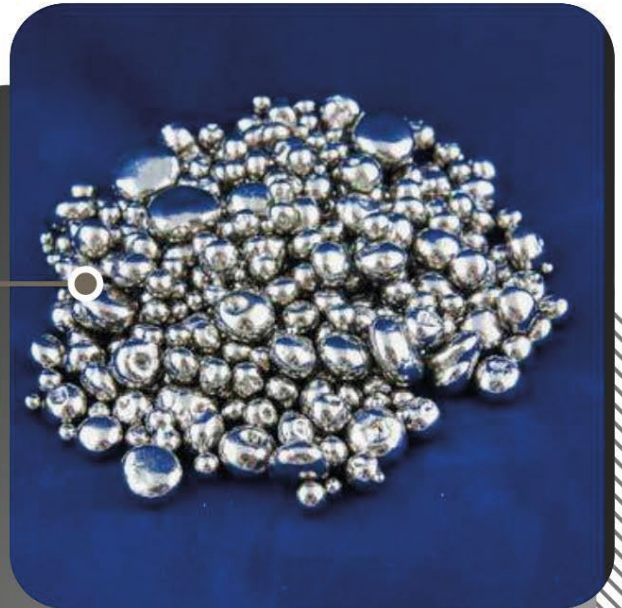
MIRANDA, CAPITAL DISTRICT

TARIFF DESCRIPTION

REFINED LEAD

OFFERED QUANTITY

1,053 TONS



METALS AND THEIR MANUFACTURES

Product:
**CABLES, OF IRON OR
STEEL (EXC. INSULATED
ITEMS FOR ELECTRICITY)**

CODE: 731210

It is a steel wire that can have various thicknesses depending on the use it will receive. It is used to attach a plant to a stake or a fence to a post, among others. The greater the weight it has to support, the greater the diameter of the wire must be. The basic elements of the steel cable are: wires, strands and core.

**UNIT OF MEASUREMENT**

TONS

PRODUCING STATES

CARABOBO

TARIFF DESCRIPTION

CABLES

OFFERED QUANTITY

779 TONS





METALS AND THEIR MANUFACTURES

Product:

LOCKS AND LOCKS

CODE: 830140

It is a metal mechanism that is incorporated into the doors and drawers of cabinets, chests, chests, etc., to prevent them from being opened without the key and thus protect their contents.



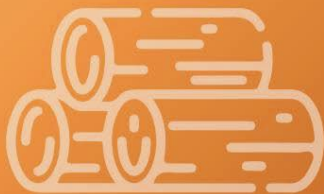
UNIT OF MEASUREMENT
TONS

PRODUCING STATES
MIRANDA

TARIFF DESCRIPTION
THE OTHER LOCKS; LOCKS

OFFERED QUANTITY
185 TONS





MANUFACTURES OF WOOD

Product:

PINEWOOD SAWNED

CODE: 4407.11.00.90

Pieces of solid wood obtained by sawing the tree, generally square, that is, with faces parallel to each other. Logically, it constitutes the base material of all wood products.

**UNIT OF MEASUREMENT**

CUBIC METERS

PRODUCING STATES

MIRANDA, LARA, MÉRIDA

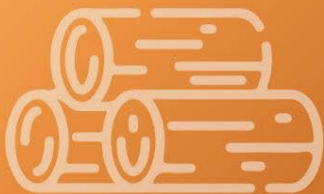
TARIFF DESCRIPTION

Others

OFFERED QUANTITY

1679287 CUBIC METERS





WOOD

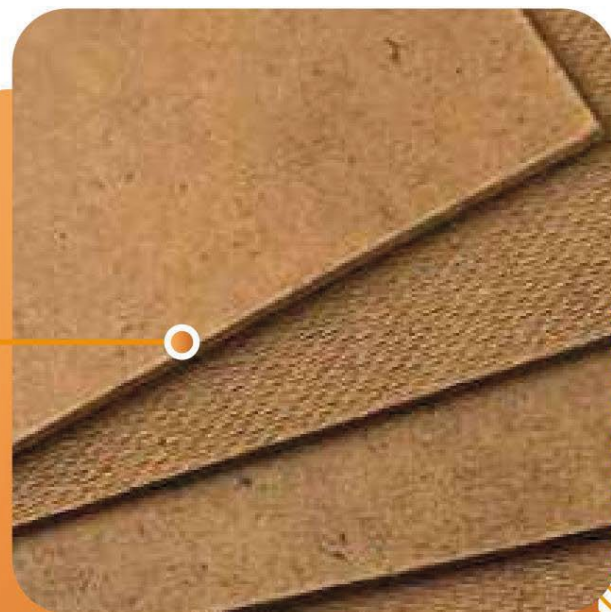
Product:

CHAPAFORTE

CODE: 4410.90.00.00

Condensed wood fiber board through the wet compaction process. internationally it is known

by the acronym hdf (in English, high density fibreboard), which indicates that its density is high compared to natural wood.

**UNIT OF MEASUREMENT**

SQUARE METERS / UNITS

PRODUCING STATES

MIRANDA, BARQUISIMETO, LARA

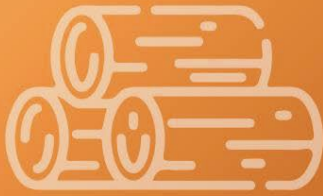
TARIFF DESCRIPTION

Others

OFFERED QUANTITY

350998 SQUARE METERS / UNITS





WOOD

Product:

**PINE (PINUS)
SAWN TIMBER****CODE: 4407.11.00.90**

Pieces of solid wood obtained by sawing the tree, generally square, that is, with faces parallel to each other. It logically constitutes the base material of all wood products.

**UNIT OF MEASUREMENT**

CUBIC METERS

PRODUCING STATES

MONAGAS, ANZOATEGUI

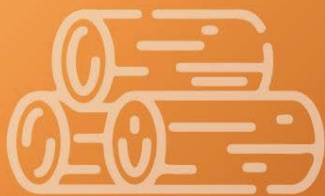
TARIFF DESCRIPTION

The others

OFFERED QUANTITY

311 CUBIC METERS





WOOD

Product:

COAL

VEGETABLE

CODE: 4402.90.00.00

Solid, fragile and porous fuel material with a high carbon content. It is produced by heating wood and plant residues to temperatures ranging between 400 and 700 °C, in the absence of air.

**UNIT OF MEASUREMENT**

CUBIC METERS

PRODUCING STATES

ARAGUA, MÉRIDA, FALCON

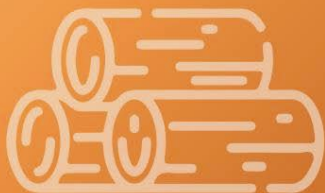
TARIFF DESCRIPTION

Others

OFFERED QUANTITY

719 CUBIC METERS





PAPER

AND CARDBOARD

Product:

**MANUFACTURES
PAPER OR CARDBOARD
(MOLDED ITEMS
OF PAPER PULP)****CODE: 4823.70.00.00**

Paper pulp is a fantastic material for modeling countless objects. It is composed of several ingredients of which the only essential one is paper pulp.

**UNIT OF MEASUREMENT**

TONS / UNITS

PRODUCING STATES

ARAGUA

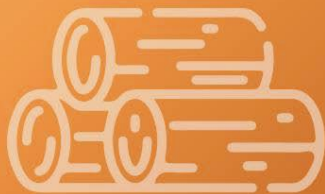
TARIFF DESCRIPTION

Molded or pressed articles of paper pulp

OFFERED QUANTITY

445.67 TONS / UNITS





Product:

**DISPOSABLE CUPS
PAPER OR CARDBOARD****CODE: 4823.69.00.10**

A disposable cup is a food container, used for drinking and discarded after use. The most common ones are made of paper, plastic and foam, the latter made with expanded polystyrene, while the plastic ones are made with polypropylene.

**UNIT OF MEASUREMENT**

TONS / BOXES

PRODUCING STATES

ARAGUA

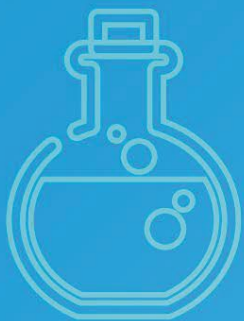
TARIFF DESCRIPTION

Disposable cups made of waxed or unwaxed paper or cardboard

OFFERED QUANTITY

15,237 TONS / BOXES





PRODUCTS

CHEMICALS

Product:

SULPHONAMIDES**CODE: 293590**

They are a type of antibiotics that are effective against many infections.

Some sulfonamides are applied directly to the skin (topically) to treat burns and skin, vaginal, and eye infections.

**UNIT OF MEASUREMENT**

TONS

PRODUCING STATES

ARAGUA

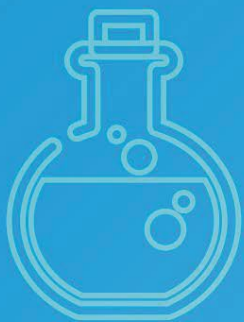
TARIFF DESCRIPTION

WHOSE STRUCTURE CONTAINS HETEROCYCLE(S)
WITH NITROGEN HETEROATOM(S)
EXCLUSIVELY:

OFFERED QUANTITY

25 TONS





PRODUCTS

CHEMICALS

Product:

**HETEROSIDES,
NATURAL
OR REPRODUCED****CODE: 293890**

Heterosides are the result of the condensation of one or several sugars (simple sugars), with a non-glucidic structure called genin or aglycone.

**UNIT OF MEASUREMENT**

TONS

PRODUCING STATES

LARA

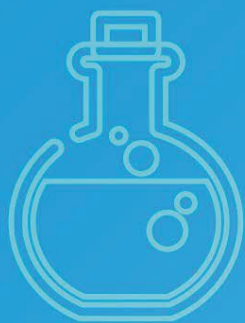
TARIFF DESCRIPTION

OTHERS

OFFERED QUANTITY

17 TONS





PRODUCTS

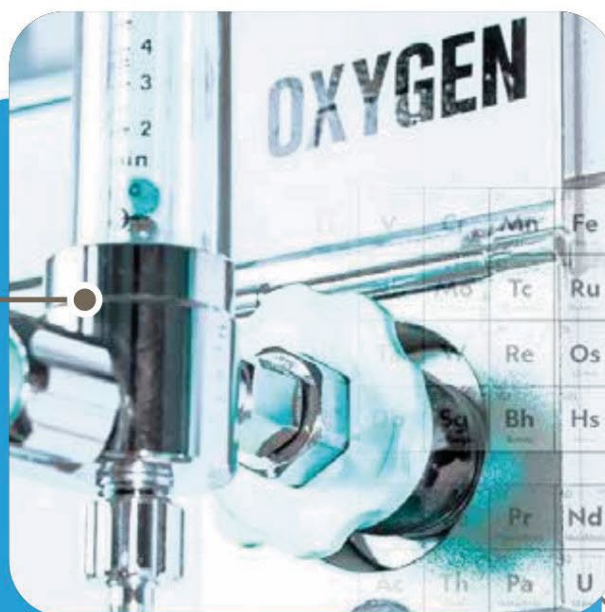
CHEMICALS

Product:

**HETEROCYCLIC COMPOUNDS
WITH HETEROATOM [S]
OXYGEN ONLY**

CODE: 293299

They are cyclic compounds in which there is at least one non-carbon atom forming part of the cyclic structure. Atoms other than carbon present in the cycle are called heteroatoms.

**UNIT OF MEASUREMENT**

TONS

PRODUCING STATES

BOLIVAR

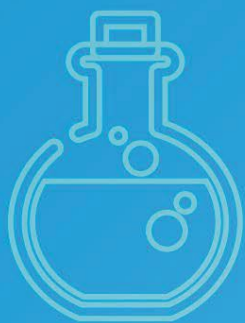
TARIFF DESCRIPTION

OTHERS

OFFERED QUANTITY

1 TONS





PRODUCTS

CHEMICALS

Product:

**SULFUR OF ANY KIND
(EXC. SUBLIMATED,
PRECIPITATED AND COLLOIDAL)**

CODE: 250300

It is an abundant and tasteless nonmetal. Sulfur is found natively in volcanic regions and in its reduced forms forming sulfides and sulfosalts or in its oxidized forms as sulfates. It is an essential chemical element for all organisms and necessary for many amino acids and therefore also for proteins.

It is used mainly as fertilizer but also in the manufacture of gunpowder, laxatives, matches and insecticides.

UNIT OF MEASUREMENT

TONS

PRODUCING STATES

ANZOATEGUI, TACHIRA

TARIFF DESCRIPTIONSULFUR OF ANY KIND, EXCEPT SUBLIMATED,
PRECIPITATED AND Colloidal.**OFFERED QUANTITY**

94,730 TONS



PRODUCTS

CHEMICALS

Product:

**SMOKE BLACKS AND OTHERS
FORMS OF CARBON****CODE: 280300**

It is a pigment of plant origin, the main component of ancient black ink. This pigment was created from charcoal. Carbon black acts as a reinforcement in tires and other rubber products. In other materials such as plastics, paints and inks, carbon black is used as a color pigment or as a filler to have electrical conductivity.

**UNIT OF MEASUREMENT**

TONS

PRODUCING STATES

CARABOBO

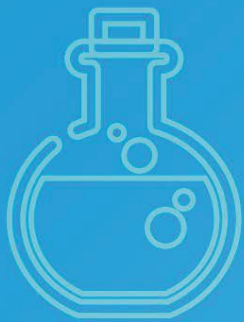
TARIFF DESCRIPTION

CARBON (CARBON BLACKS AND OTHER FORMS OF CARBON NOT EXPRESSED OR UNDERSTOOD ELSEWHERE).

OFFERED QUANTITY

14,759 TONS





PRODUCTS

CHEMICALS

Product:

**CARBORES
SILICON****CODE: 284920**

It is a compound produced from a mixture of quartz and carbon, which is heated to high temperatures in electric furnaces to produce a reaction and obtain sic. It is a granular material with a dark crystalline appearance and is handled in different sic concentrations.

**UNIT OF MEASUREMENT**

TONS

PRODUCING STATES

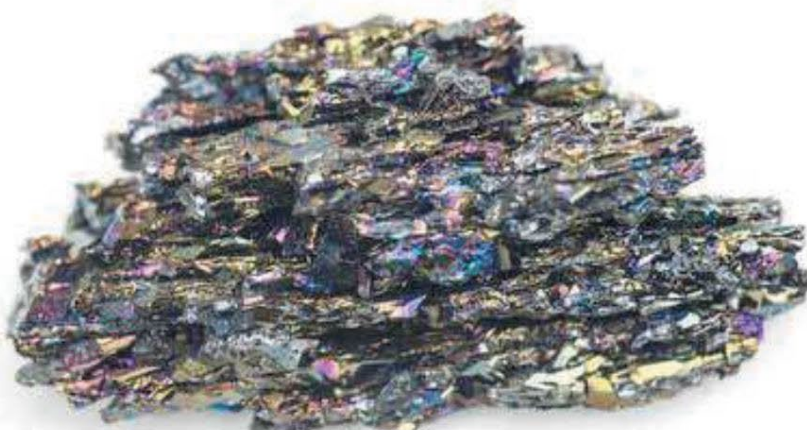
BOLIVAR

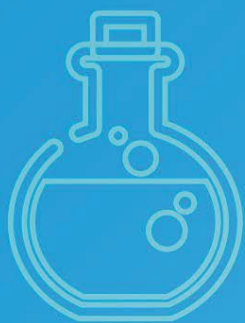
TARIFF DESCRIPTION

SILICON

OFFERED QUANTITY

3,667 TONS





PRODUCTS

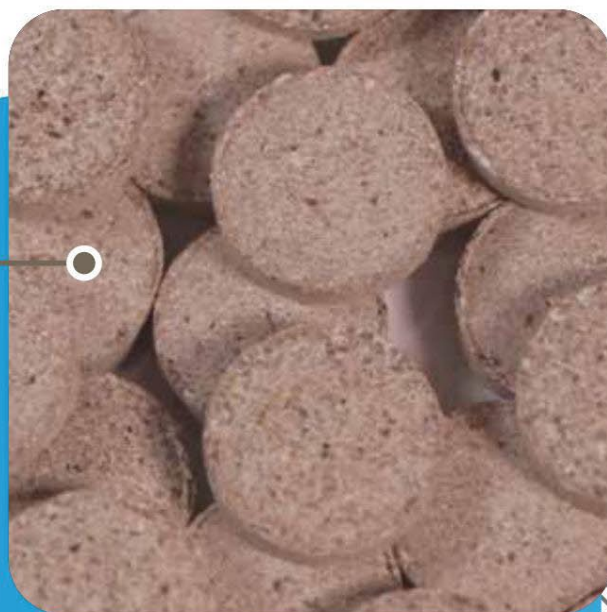
CHEMICALS

Product:

FERTILIZERS IN TABLETS OR SIMILAR FORMS**CODE: 310510**

They are growth stimulating tablets for plant roots.

They contain essential trace elements, amino acids and vitamins. They are rich in iron, manganese, magnesium, calcium, potassium, inositol, choline b 12, biotin and other factors

**UNIT OF MEASUREMENT**

TONS

PRODUCING STATES

MIRANDA

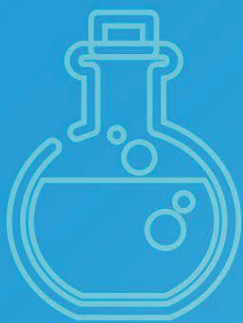
TARIFF DESCRIPTION

PRODUCTS OF THIS CHAPTER IN TABLETS OR SIMILAR FORMS OR IN CONTAINERS OF A GROSS WEIGHT LESS THAN OR EQUAL TO 10 KG

OFFERED QUANTITY

2,000 TONS





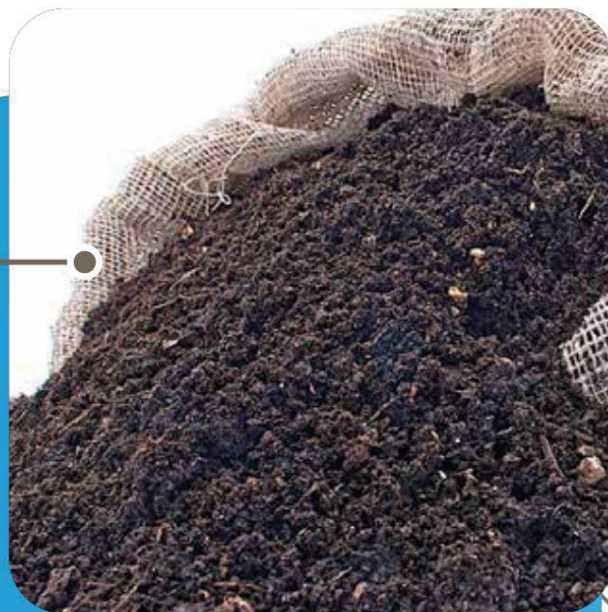
PRODUCTS

CHEMICALS

Product:

**ORIGIN FERTILIZERS
ANIMAL OR VEGETABLE****CODE: 310100**

Fertilizers are obtained from natural materials of plant or animal origin that decompose naturally in the soil and release essential nutrients for plants. They are obtained from natural materials of plant or animal origin that decompose naturally in the soil and release essential nutrients for plants.

**UNIT OF MEASUREMENT**

TONS

PRODUCING STATES

MIRANDA

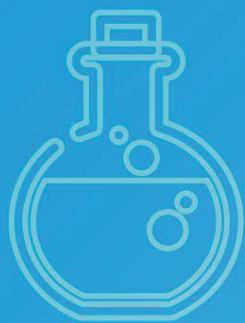
TARIFF DESCRIPTION

FERTILIZERS OF ANIMAL OR VEGETABLE ORIGIN, EVEN MIXED WITH EACH OTHER OR CHEMICALLY TREATED; FERTILIZERS FROM THE MIXING OR CHEMICAL TREATMENT OF PRODUCTS OF ANIMAL OR VEGETABLE ORIGIN.

OFFERED QUANTITY

129 TONS





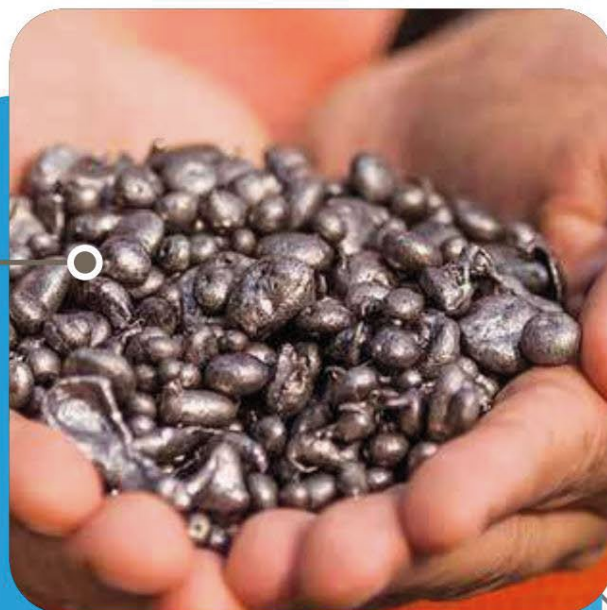
PRODUCTS

CHEMICALS

Product:

FERRON-NICKEL**CODE: 720260**

Ferronickel is a ferroalloy of iron and nickel that is obtained from the carbothermal reduction of serpentinitic type nickel minerals such as limonite, serpentine or garnierite.

**UNIT OF MEASUREMENT**

TONS

PRODUCING STATES

MIRANDA

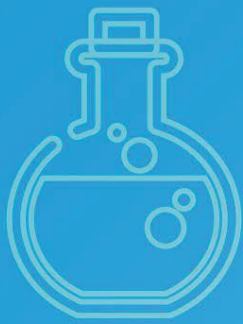
TARIFF DESCRIPTION

FERRON-NICKEL

OFFERED QUANTITY

2,741 TONS





PRODUCTS

CHEMICALS

Product:

**MISCELLANEOUS PRODUCTS
OF THE INDUSTRIES
CHEMISTRY****CODE: 382319**

Industrial chemistry uses chemical and physical processes to transform raw materials into products beneficial to humanity. This includes the production of basic chemical products for the manufacture of goods in various industrial sectors. Industrial chemistry can be perceived as the production of synthetic substitutes for natural products

**UNIT OF MEASUREMENT**

TONS

PRODUCING STATES

ZULIA, CAPITAL DISTRICT, MERIDA

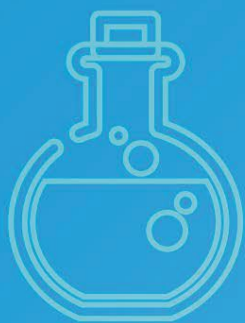
TARIFF DESCRIPTION

OTHERS

OFFERED QUANTITY

4,635 TONS





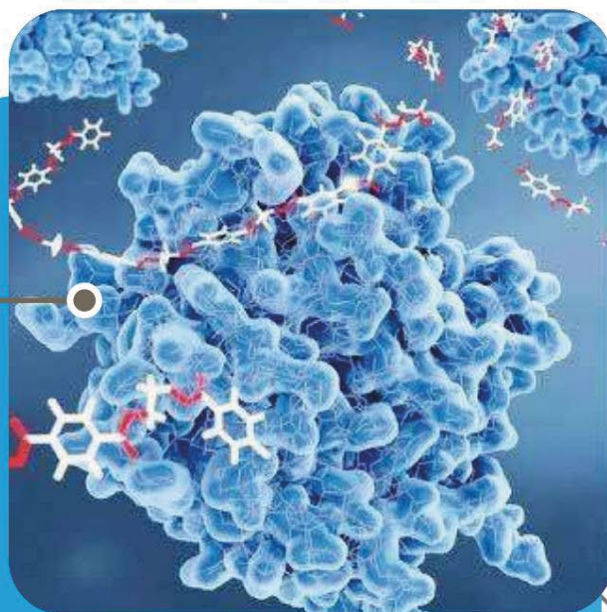
PRODUCTS

CHEMICALS

Product:

**ENZYMES AND PREPARATIONS
ENZYMATIC (EXC. RENNET
AND ITS CONCENTRATES)****CODE: 350790**

They are complex proteins that produce a specific chemical change. And enzymatic are formulations preparations are composed of one or more food enzymes in which substances such as food additives or other ingredients are integrated in order to facilitate their storage, sale, standardization, dilution or dissolution.

**UNIT OF MEASUREMENT**

TONS

PRODUCING STATES

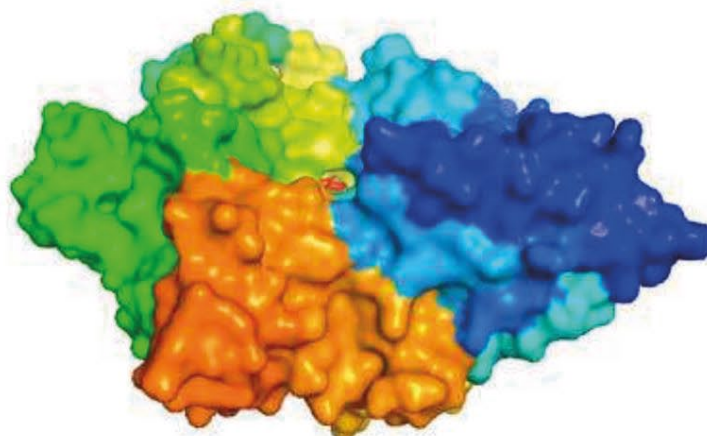
ZULIA

TARIFF DESCRIPTION

OTHERS

OFFERED QUANTITY

4 TONS





Venezuela
abierta al futuro

Bancoex>

www.bancoex.gob.ve

Content:
Statistics and Commercial Intelligence Management
Layout:
Digital Content Management
Copyright of the Foreign Trade Bank